



# ELIMINATION 8

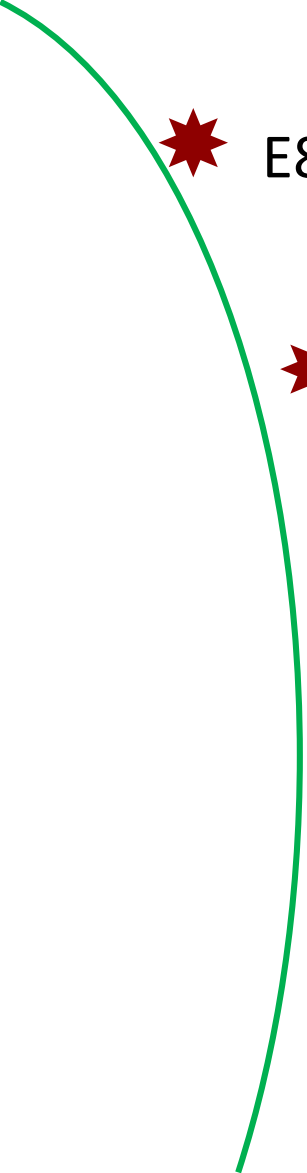
ANGOLA • BOTSWANA • ESWATINI • MOZAMBIQUE  
NAMIBIA • SOUTH AFRICA • ZAMBIA • ZIMBABWE

## Harmonized Indoor Residual Spraying capacity building

RBM Vector Control Working Group  
15<sup>th</sup> Annual Meeting, February 3 – 5<sup>th</sup> 2020

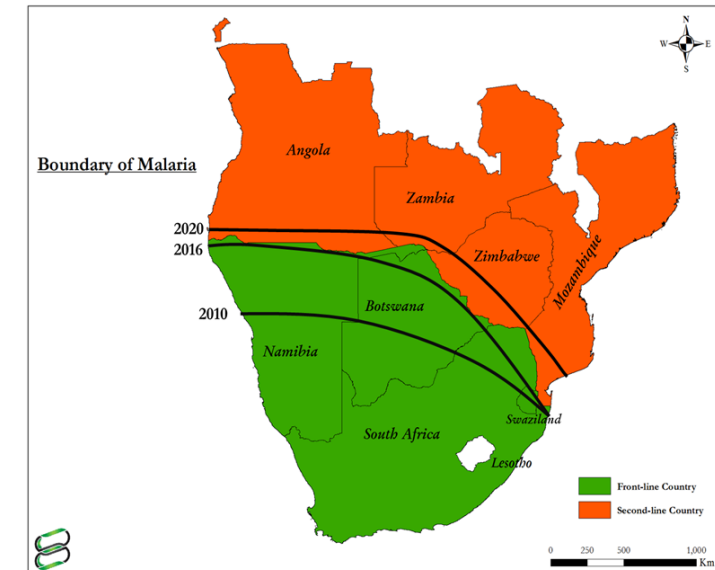
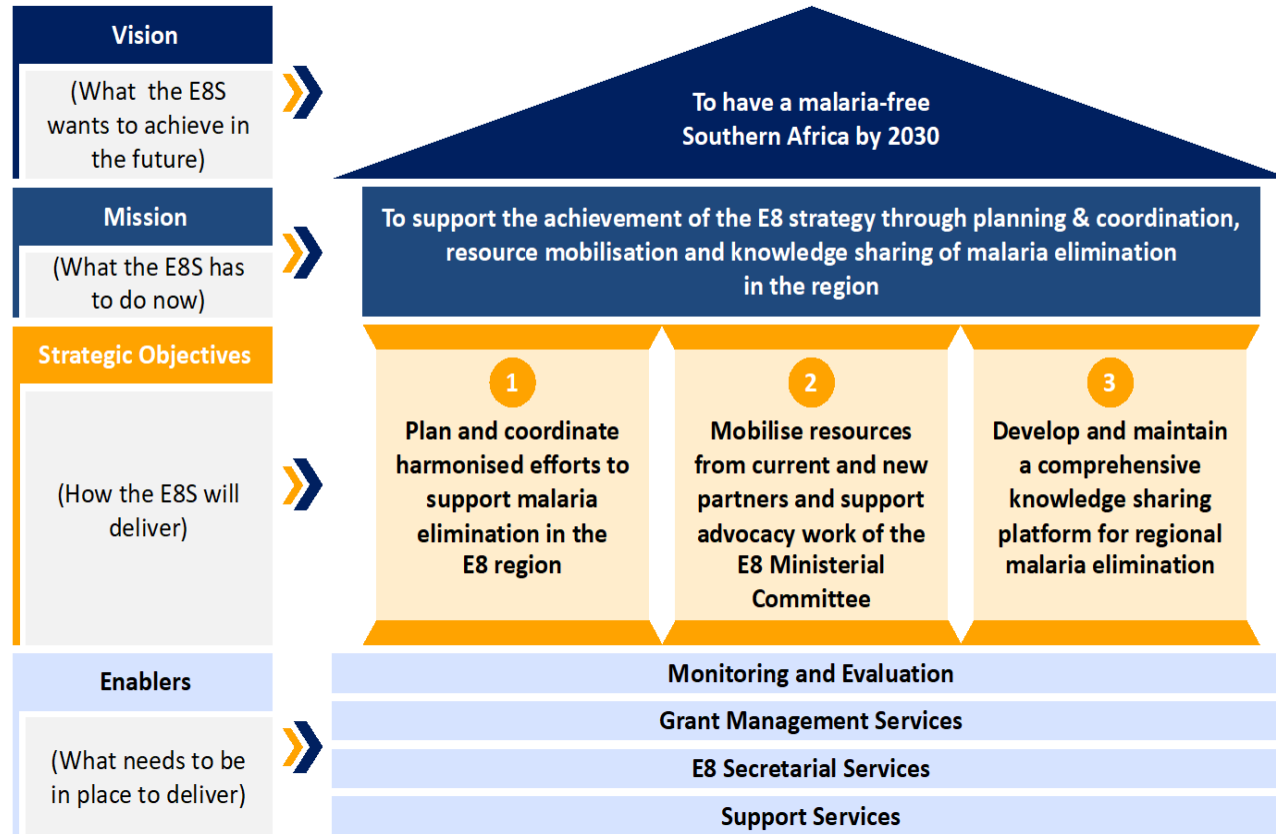
Chadwick H. Sikaala

# Presentation outline:

- 
- ★ E8 Architecture
  - ★ Rationale for Regional Harmonized Capacity building
  - ★ Regional Harmonized Indoor Residual Spraying Capacity building
  - ★ Examples and Key Lessons learnt, recommendations

# E8 Architecture

A strategic architecture framework has been developed for the E8 Secretariat



# Rationale for Regional Vector Control Capacity Building

- Limited information on perspective of Vector Control Implementation in different countries
- Difference in epidemiological profile and approach to implementation
- Variance in indicators collected and definitions
- Differences in approach to training of personnel
- Human resource (spray operator ; Supervisor ratio) and logistical challenges: Quality issues
- 2017 malaria upsurge in the region
- Emergency Ministerial meeting
- Elimination 8 Strategy: Acceleration Plan 2018 – 2020



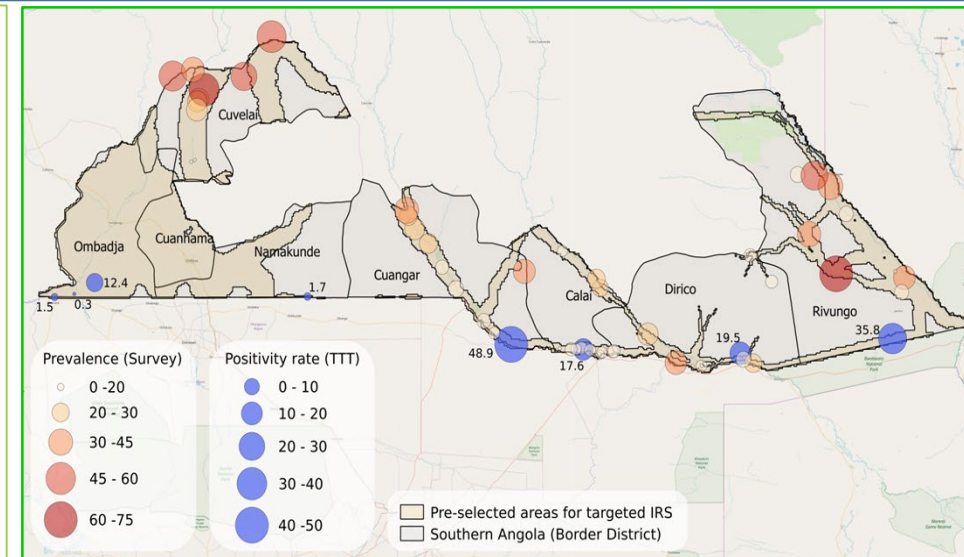
# Training of Trainers to Enhance Quality of IRS across the E8 Region:

- Regional Vector Control serves as a platform for Technical Assistance, coordination, Harmonization of activities & best practices sharing
- Collaboration with partners (RBM & AFRO WHO)
- WHO provided 2 consultants (Development of manual and Training)
- Harmonized regional IRS training manual developed (Reference materials and consultations)
- Training conducted in South Africa
  - 32 participants ( All TWG & or representatives, E8 and 2 WHO consultants)
- Countries adoption of the harmonized training manual



# Indoor Residual Spraying in targeted districts of southern Angola (example of best practice adoption)

- Through BMGF support an IRS decision map was developed (MIS 2017/18)
- Initiative to target sources of infection along the border
- Procurement of insecticides for Angola & Namibia co payment (MoU IVCC)
- **Standard Operating Procedures & guidelines for IRS revised (Environmental safeguards, IEC/BCC, transportation, Training of Trainers manuals)**
- Implementation
  - Targeting 5 districts in Cuando Cubango (Rivungo, Dirico, Calai, Cuangar & Menongue)
  - Estimated to spray ~ 73,000 structures protecting ~ 443,000 population
  - Training of Trainers (~246 supervisors ) & cascade trainings (~ 738 personnel)
- **Environmental compliance**
  - **Innovation for Storage and disposal (mobile units) facilities**
  - **Mobile unit cost ~\$40 compared to ~ \$ 2130 cost for the standard static wash bay**



Targeted IRS districts (Risk Map) : Southern Angola



Standard Wash bays

New innovations: Mobile units



# Harmonized Vector Control Indicators



## VECTOR CONTROL AND ENTOMOLOGICAL SURVEILLANCE SCORECARD



2018	Vector Control Activities				Entomological Surveillance				Quality Assurance and Policy		2018
Country	Indoor Residual Spraying Coverage (%) 1	Net Ownership	Net Utilization	Larval Survey	Vector Species identification	Vector seasonal and spatial distribution	Vector resting behaviour	Insecticide resistance	Insecticide residual effect	IRM plan in place	Country
<b>FRONT LINE Countries</b>											
A	* < 80 %	* 95 -100 %	* < 80 %	* 0 - 90 %	* Have collected and shared the data	* Have not collected or shared the data	* Have not collected or shared the data	* Have collected and shared the data	* Have collected and shared the data	* IRM Plan in place	A
B	* > 85 %	* < 85 %	* < 80 %	* 0 - 90 %	* Have collected and shared the data	* Have collected and shared the data	* Have collected and shared the data	* Have collected and shared the data	* Have not collected or shared the data	* IRM currently being developed	B
C	* > 85 %	* Not Applicable	* Not Applicable	* 1	* Have collected and shared the data	* Have collected and shared the data	* Have collected and shared the data	* Have collected and shared the data	* Not Applicable	* IRM Plan in place	C
D	* Not Applicable	* Not Applicable	* Not Applicable	* Not Applicable	* Not Applicable	* Not Applicable	* Not Applicable	* Not Applicable	* Not Applicable	* Not Applicable	D
<b>SECOND LINE Countries</b>											
E	* < 80 %	* 95 -100 %	* < 80 %	* 0 - 90 %	* Have collected and shared the data	* Have collected and shared the data	* Have collected and shared the data	* Have collected and shared the data	* Have collected and shared the data	* IRM currently being developed	E
F	* Not Applicable	* 85 - 94.9 %	* Not Applicable	* Not Applicable	* Not Applicable	* Have not collected or shared the data	* Not Applicable	* Not Applicable	* Not Applicable	* Not Applicable	F
G	* 80 - 85 %	* Not Applicable	* 80 - 85 %	* 0 - 90 %	* Not Applicable	* Not Applicable	* Have collected and shared the data	* Not Applicable	* Not Applicable	* IRM currently being developed	G
H	* Not Applicable	* Not Applicable	* > 85 %	* Not Applicable	* Have collected and shared the data	* Not Applicable	* Not Applicable	* Have collected and shared the data	* Not Applicable	* Not Applicable	H

Data Source: E8 Ministries of Health



# Key Lessons Learnt : Regional Indoor Residual Spraying Training of trainers

## Observations:

- Best practices strengthens regional collaboration
- Harmonization and synchronization of key activities
- Data sharing key to regional harmonization efforts
- Understanding of indicators key to success

## Key Challenges:

- Time constraints limitations
- Limited participation of partners
- Lack of in-country adapted reference materials
- Review of process and results

## Key recommendations:

- Field feedback for future refining
- Allocate more time and resources
- Consultations of all partners and key players
- Independent review and further recommendations
- Translation and Online publication





# Acknowledgement

E8 NMCPs

E8 TWG members

WHO AFRO & RBM

All partners that contributed

