



# Larval Source Management (LSM)



Photo Credit Courtney Smith, Unsplash

RBM Vector Control Working Group (VCWG) – 17  
Annual Meeting  
May 4, 2022

Beena Bhamani  
MESA



Subscribe

Follow us

Search

Log In

[MESA Track](#) [Resource Hub](#) [Opportunities](#) [About](#)

[Home](#) > MESA Track



A living database which captures research projects and institutions' portfolios in malaria elimination and eradication.

DASHBOARD

DEEP DIVES

ABOUT THE DATA

SEARCH

SUBMIT A PROJECT

Choose one of the below to profile

Theme

Funding Source

Principal Institution

Principal Investigator

Note: These numbers reflect the projects in the MESA Track database. This is not a comprehensive view of all malaria projects in the world.

## All Projects

TOTAL PROJECTS

**1811**

206 active

TOTAL FUNDING

**\$3.52B**

\$535M active

PROJECT SITES

**140**

97 active

PRINCIPAL INSTITUTIONS

**511**

137 active

[VIEW ALL](#)

# MESA Track

A living database which captures research projects and institutions' portfolios in malaria elimination and eradication.



Subscribe

Follow us

Log In

MESA Track Resource Hub Opportunities About

Home > MESA Track > Deep Dives



A living database which captures research projects and institutions' portfolios in malaria elimination and eradication.

DASHBOARD

DEEP DIVES

ABOUT THE DATA

SEARCH

SUBMIT A PROJECT

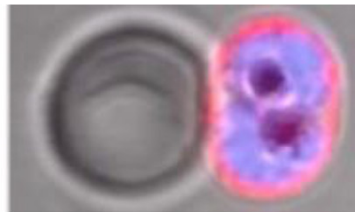
## Deep Dives

The Deep Dives show -as far as possible- the state of the art of main malaria research topics. Taking MESA Track as the information source, the Deep Dives gather all the projects around a specific research question and classify them according to research areas, timelines and geographic locations. They also include information on funding sources, principal institutions and principal investigators. The aim of the Deep Dives is to be a "one-stop-shop" where the malaria community can glance at the research being done in a specific area, with details of the questions that are being addressed, the methods used, and the results obtained. They are similar to systematic reviews of published evidence, but differ in that the Deep Dives collect a broader scope of methodologies, and focus not only on the published results but also on the ongoing research and the characteristics of the projects themselves. Choose a topic to view the details.



### Towards a vaccine for Plasmodium vivax

In 2013, the Malaria Vaccine Technology Roadmap (MVTR) was updated in response to marked changes in epidemiology and control status of malaria. The need to address Plasmodium vivax malaria infections were therefore considered and vaccine for P. vivax was made part of the vision leading to progressive malaria elimination and-



### Nanotechnology to combat malaria

In order to eliminate malaria from endemic areas new strategies, such as nanotechnology, are starting to be part of the therapeutic arsenal to fight malaria. Applied nanotechnology can contribute to discover new vaccine formulations or diagnostic test, more targeted treatments, more efficient vector control strategies or to block specifically transmission



### Reactive strategies

Malaria 'reactive strategies' are those implemented in response to a recently confirmed infection (index case) among a subset of population, i.e. household members, neighbours, or co-travellers/co-workers who may have experienced the same exposure as the index case. The WHO Global Malaria Programme is currently developing new Guidelines for Malaria Elimination to provide policy advice to countries, including recommendations on the implementation



Photo Credit Courtney Smith, Unsplash

## Larval source management

While long-lasting insecticide-treated nets and indoor residual spraying remain the backbone of malaria vector control, larval source management (LSM), which includes larviciding, has gained renewed interest as an additional intervention for the malaria toolbox. This deep dive compiles the landscape of recent and ongoing research in larviciding and provides an overview of the projects' characteristics.

# MESA Deep Dives

# Larval Source Management

This deep dive compiles the landscape of recent and ongoing research in larviciding and provides an overview of the projects' characteristics.

TOTAL PROJECTS

**31**

3 active

TOTAL FUNDING

**\$33.0M**

\$7.79M active

PROJECT SITES

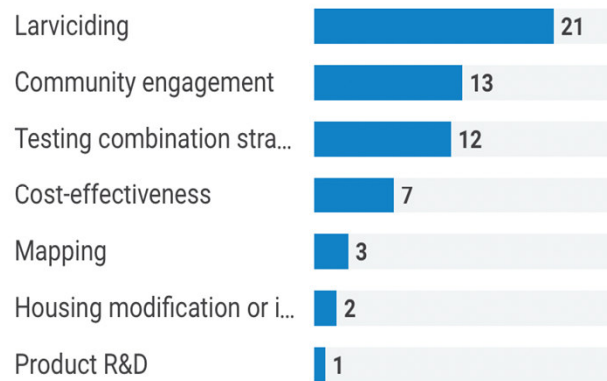
**16**

3 active

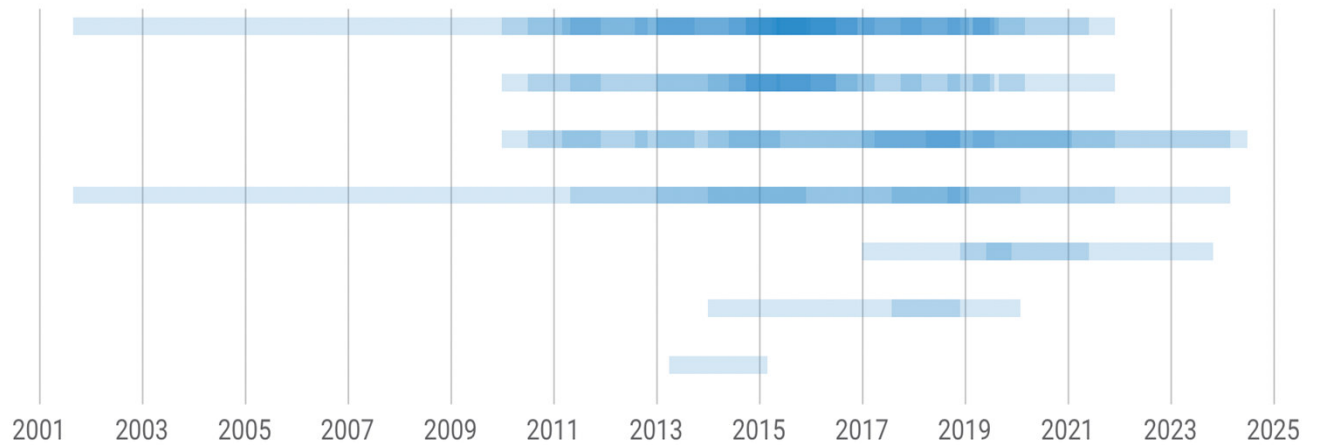
## Research Area

## Total Projects

## Project Timeline



Download ↓

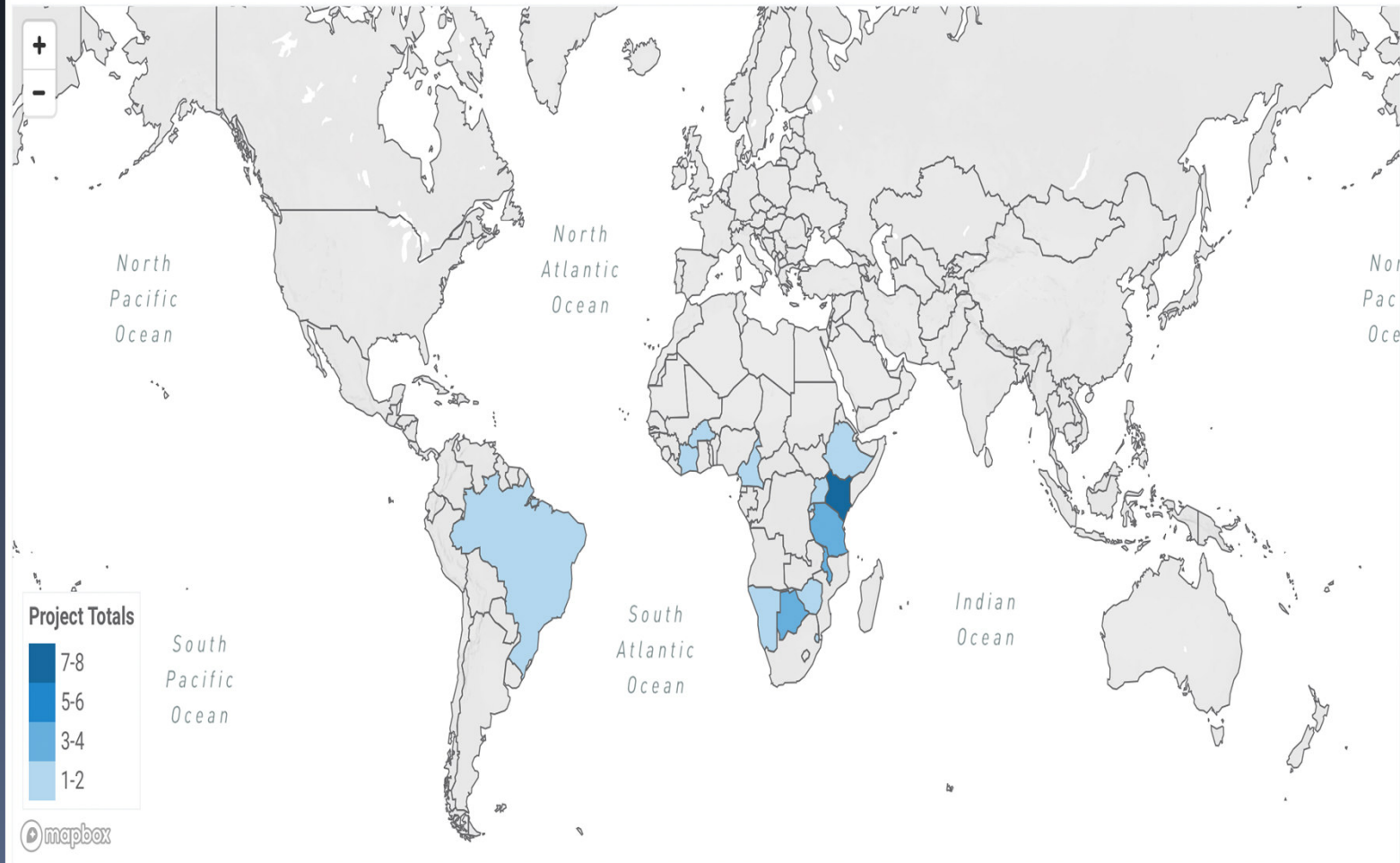


# Larval Source Management



# Larval Source Management

## Project Sites

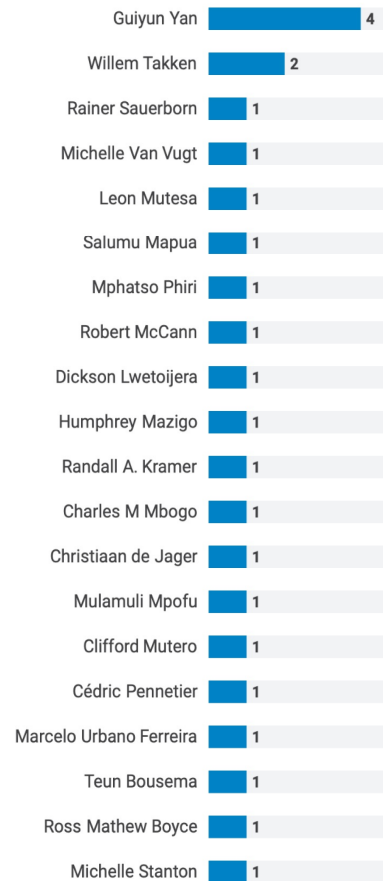


# Larval Source Management

## Top 20 Principal Institutions



## Top 20 Principal Investigators



## Funding Sources



Be part of this  
living  
database



Subscribe



Follow us



Search



Log In

MESA Track Resource Hub Opportunities About

[Home](#) > [MESA Track](#) > [Submit Your Project](#)



A living database which captures research projects and institutions' portfolios in malaria elimination and eradication.

DASHBOARD

DEEP DIVES

ABOUT THE DATA

SEARCH

SUBMIT A PROJECT

## Submit Your Project

MESA Track is as an open and online platform for sharing information on current projects relevant to **malaria elimination and eradication research agenda**.

This form allows you to submit one project at time. The more information you can provide the better. Before appearing in the MESA Track database, the information submitted goes through quality control processing.

Thank you very much for your collaboration. We'll endeavour to make your investment in time and energy with us worth your while!

### About you

NAME \*

EMAIL \*

INSTITUTION

Where do you work?

SUBSCRIBE TO OUR NEWSLETTER

Yes

### Project information


TITLE \*

PRINCIPAL INVESTIGATOR \*

PI INSTITUTION \*



## Way Forward

- Ongoing LSM activities including products used by different countries is not known - collaborating with countries will help in identifying the real case scenario
  - We need to capture ongoing independent evaluation (if there are any)
  - Study design?
  - Evaluation methodology?
- 
- Evidence based decision making



Thank you