

RBM Malaria in Pregnancy Working Group SWOT Analysis

FEBRUARY 13, 2019

MAPUTO, MOZAMBIQUE



Working Group Mission

- Provides strategic advice on best practices for scaling up interventions for the prevention and control of MiP towards the achievement of global targets
- Promotes and supports WHO strategy to control MiP:
 - Insecticide treated bed net use (ITN)
 - Effective case management
 - Intermittent preventive treatment (IPTp) in areas of moderate to high malaria transmission

Priority Areas

- Alignment of RBM partners on best practices and lessons learned in MiP programming to help achieve higher coverage in MiP interventions globally
- Advocacy through the development of key tools and products targeting policy makers and program managers with the most up to date information in MiP programming
- Supporting research and documentation of best practices and lessons learned
- Coordination and collaboration with other RBM mechanisms
- Promoting partnership between reproductive health and malaria control programs



Process

Solicit feedback from MiP WG members

Compile and identify themes

Review and validate results

Discuss

Integrate into strategy/planning



SWOT analysis

Strengths

- Engagement/funding from a variety of MiP partners including researchers, donors, implementers
- Strong commitment to the prioritization of MiP

Opportunities

- Assist countries with the adoption of the WHO ANC recommendations and adaptation to the country context
- Community based interventions that have the potential to successfully expand coverage and reach the hardest to reach populations
- Linkages with GFATM, Every Woman Every Child Initiative to help promote MiP

Weaknesses

- WG is primarily focused on sub-Saharan Africa, although there have been efforts to focus on other regions of the world

Threats

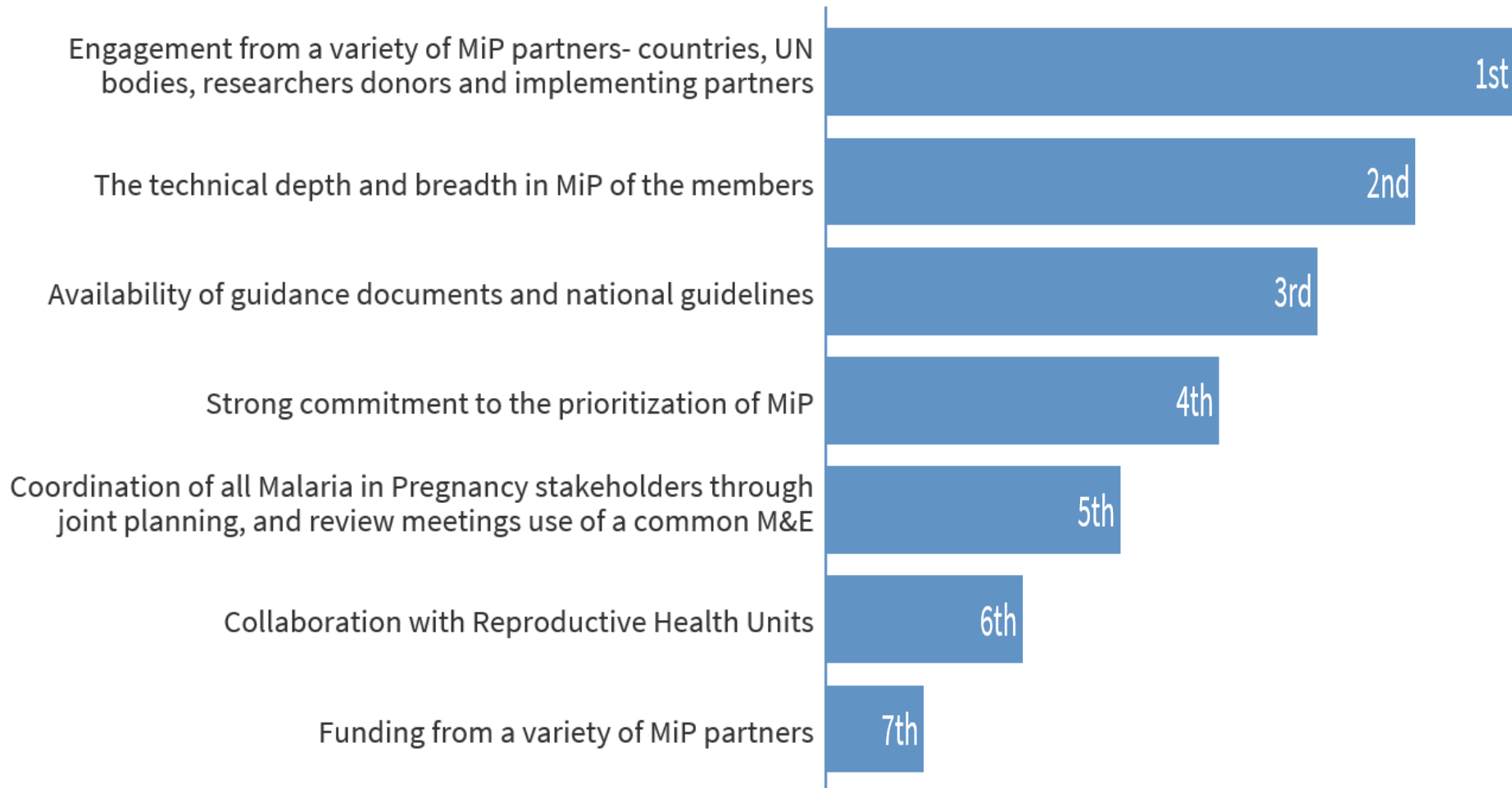
- WG has no funding and minimal administrative support so there is reliance on partner support

Strengths

Where we are doing well

1. What do we do well?
2. Where do we want to lead?
3. Who/what are we impacting? (policy, program areas, vulnerable populations, health systems)
4. What do we want to bring to scale or build on?
5. Are we seen as leaders? In what areas?

Strengths Ranked by Importance



Weaknesses

Where we can improve

1. What are our weak technical/programmatic/support areas?
2. Where are we reliant on other partners/structures to round out our approaches?

Weaknesses Ranked by Importance



Opportunities

1. What space we can fill and where are there missed opportunities?
2. What should our niche be given these opportunities?
3. Are we cultivating new relationships or partnerships?
4. What do we want to bring to scale?
5. Where do we want to innovate?
6. Where do we want to expand?
7. Who/how/what are we targeting? (program areas, vulnerable populations, geographic areas, etc)

Opportunities Ranked by Importance

Share policy direction with countries. Learn best practices, partnerships/ networking

1st

The use of MiP resources /expertise to align and strengthen other strategies/programs for e.g. RHP, integrated supervision, reporting etc.

2nd

Assist countries with the adoption of the WHO ANC recommendations and adaptation to the country context

3rd

Engagement with NMCPs enable rapid introduction of innovative approaches at country level

4th

Collaboration between NMEP and RHP; opportunities exist for strengthening this collaboration at sub-national level

5th

Increased interest (Global fund/PMI) globally and nationally can be used to mobilize resources for MiP

6th

Wide range of experts with varying skills and knowledge

7th

Monitoring and Evaluation System (Use of ICTs and Electronic Data Collection and Archiving System)

8th

Community based interventions that have the potential to successfully expand coverage and reach the hardest to reach populations

9th

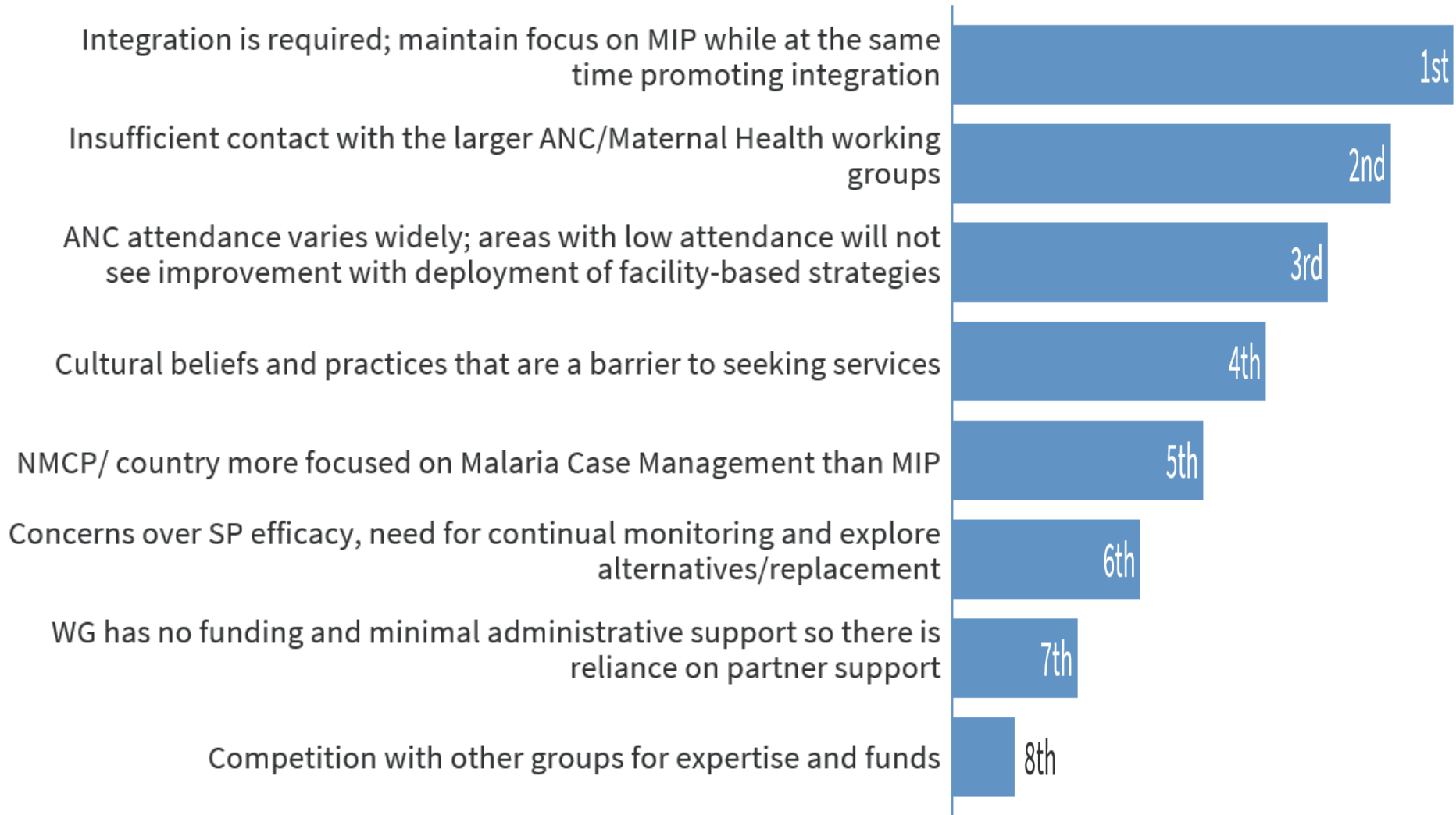
Population that is willing to positively change once given the opportunity, need to engage them during planning, implementation.

10th

Threats

1. What are the main challenges to our work?
2. How do we stay relevant?

Threats Ranked by Importance



Final Thoughts

What stands out as critical?

Did we miss anything key?

How will the SWOT impact your work in your countries?

Way Forward

Integrate into next MiP WG workplan

Integrate into country actions/planning

???

Thanks to everyone
for your input before
and during the
retreat!