

SMERG, Kigali May 2022

Updates CRSPC

Drs. Melanie Renshaw / Peter Olumese

Country & Regional Support Partner Committee Update

Drs. Melanie Renshaw / Peter Olumese

Country & Regional Support Partner Committee

The CRSPC provides a platform to engage the RBM Partnership community in coordinating support to countries and regions as they execute their malaria control and elimination programmes

Support is based on country demand and is tailored to suit the requirements, existing capacity and partner support

The CRSPC operates a triage mechanism to ensure that support does not compete with or duplicate existing mechanisms that are working effectively

Consultants are sourced from within the region where they are working (south south collaboration)

CRSPC Roles and Responsibilities

1

Technical Strategies and Implementation Plans

Role of the CRSPC

Co-ordinate support for the development and validation of technically sound, implementable, country-led malaria control and elimination strategies, and sustained financial plans

Example support provided

- Malaria Programme Reviews
- Updating National malaria strategic plans
- Regional strategies and plans

2

Resolve Implementation Bottlenecks

Co-ordinate an early warning system that **identifies bottlenecks** both proactively and reactively and implement a rapid response mechanism to support countries to overcome these implementation bottlenecks

- COVID-19 mitigation
- Planning and implementing campaigns (LLINs, SMC, IRS)
- High Burden High Impact
- Emergencies and upsurges
- Zero Malaria Starts with Me!
- Data sharing for joint problem solving

3

Resource Mobilisation

Co-ordinate and provide technical assistance and implementation support for comprehensive financial gap analyses, development of funding proposals and investment requests, fostering country coalitions, and coordinating engagement with donors at all levels to address bottlenecks and gaps

- Financial gap analyses
- Global Fund funding requests
- Identifying flexibility within existing sources of funding
- Innovating financing including End Malaria Funds

1 Support countries in the design of quality, prioritized programmes at country and regional levels

Support the design of quality, prioritized programmes at the country level

Support provided

- CRSPC in collaboration with WHO, is providing support to countries and regions in developing malaria strategic plans and in conducting MPRs
- CRSPC is supporting 3 countries in the Malaria Matchbox implementation to identify and address barriers in CRG
- Support has switched from virtual to in-person support at the request of countries

Impact

- Align malaria planning with the broader health and development agenda, and support to resource mobilization.
- Opportunity to incorporate a mix of new tools and best practices, including strategy to ensure access to everyone.
- Enable countries to design policies, set new targets and improve their coordination systems, including incorporation of CRG programming

Building regional capacity in Africa and Southeast Asia

- Regional bodies: EAC (GLMI), SADC and E8, SaME, and SEA were supported in the development of the Malaria Strategic plans, coordination activities, and others
- Recruited focal points in EAC, SADC and WAHO to enhance regional capacity

- Align malaria planning with the broader health and development agenda, and support to resource mobilization.
- Mainstream malaria in the agenda of the regional economic communities including at Head of State, minister and technical level

2 Facilitate timely access to implementation support to address bottlenecks and gaps

Implementation support to address bottlenecks and gaps

- Implementation supports provided /ongoing to countries and regions through international and local consultants in 2022
- These include planning ITN, IRS campaigns in the context of the COVID-19 pandemic and working to support continuity of care by addressing resource gaps and commodity stock outs etc
- Other support included development of communication and behaviour change strategies, launch and implementation of Zero Malaria Starts with Me campaigns, Retrospective assessment of the malaria programme, surveillance etc



- Support has helped to mitigate against the impact of COVID-19

Support provided

Impact

COVID-19 continues to disrupt malaria control programmes



Commodity delivery times continue to be at least 2 months longer than before COVID-19 and countries have faced stock outs for case management as well as delays to campaigns. This has reduced during Q1 2022 compared to Q4 2021



Countries are reporting that domestic resources originally committed to malaria have been diverted to the fight against COVID-19



The cost of delivering commodities to end users and commodity prices have increased in 2022 – especially for LLINs

CRSPC Support

Essential Commodity Tracking: Tracking supply availability in countries (ACTs, RDTs, artesunate, LLINs, IRS, SMC commodities) and working to troubleshoot filling of gaps as they arise including resource mobilization, airlifting of commodities and splitting deliveries where required in close collaboration with PMI and the Global Fund and encouraging early procurement

Addressing Bottlenecks: Regular multi-partner check-ins with countries to track and problem solve as real time malaria programming bottlenecks arose including addressing upsurges, supporting countries in reprogramming and resource mobilization to address gaps, and working together across the partnership

Advocacy: Linking to political level as required to advocate against delays in campaigns and to sustain malaria programming

2 Support countries to Implement HBHI

Countries continued to implement the major activities in the four response elements

- Political Will
- Strategic Information to drive impact
- Better guidance, policies and strategies
- Coordinated national malaria response

In 2021, RBM and WHO organised quarterly partner coordination calls with HBHI countries to review the status of implementation of these activities

In 2022 we are undertaking a joint evaluation of the HBHI approach

All HBHI countries in Africa have been using their malaria scorecard management tools

Mozambique and **Uganda** have launched their End Malaria Councils and Funds and **Tanzania, Nigeria, Cameroun, Burkina Faso** and **DRC** are at an advanced stage of launching to keep malaria high on the national financing and development agenda

Enhanced parliamentary engagement in malaria e.g. Tanzania and Ghana

Sub-national Stratification has been mainstreamed into NSPs, MPRs and GF funding applications for ALL HBHI countries

Zero Malaria Starts with Me launched in 9 HBHI countries

Enhanced resources have allowed switch to PBO nets and expansion of SMC and CHWs

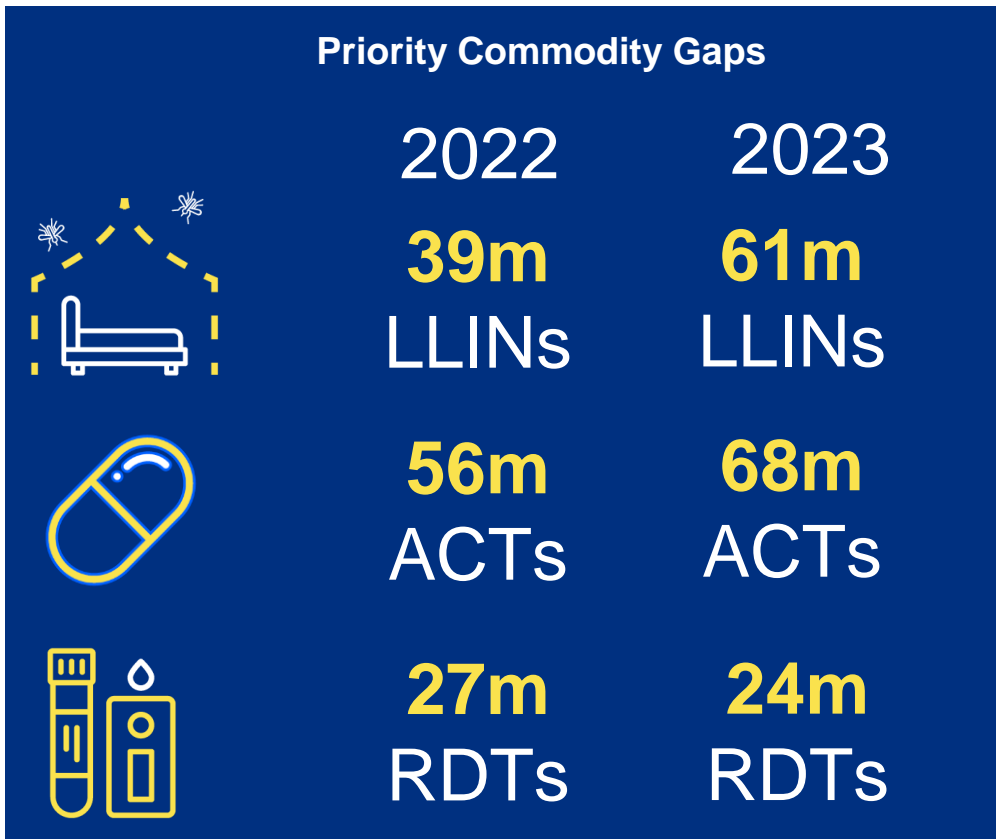
3 Support countries with mobilizing and prioritizing domestic and other resources

Support provided

- In 2022 CRSPC has supported MOSASWA in their GF application
- Supported Tanzania for domestic resource mobilisation and multi-sectoral engagement
- The country gap analysis for 2021-2023 period was compiled by CRCPC is available on RBM website

Impact

- Updated gap analysis revealed that 95% of highly and moderately endemic countries mobilised sufficient resources to cover their LLIN, IRS, SMC and case management gaps in 2022 but we still need to understand how the increased commodity prices and delivery costs will impact this



Four in person sub-regional malaria programmes and partners meetings are being planned in 2022

- The meetings will give an opportunity for the countries to share best practices, challenges in mitigating the impact of COVID-19 on malaria intervention
- The meeting will also an opportunity to inform countries on the current malaria prevention control tools, perspectives to better plan and implement – updates from WHO and train countries on the malaria matchbox
- Countries will present their TA needs for 2022 and 2023
- We will also support countries in preparing for the GF application process - gap analysis updates, NSPs and MPRs, malaria matchbox etc

Priority Activities for 2022

Ensure countries have sufficient funding, capacity and political commitment to implement their National plans

1

Technical Strategies and Implementation Plans

- Support to MPRs and NSPs
- Support to the Malaria Matchbox implementation
- Support to Regional Economic Communities in strengthening the implementation of regional Initiatives and coordination
- Document best practices including in malaria matchbox implementation

2

Implementation Support

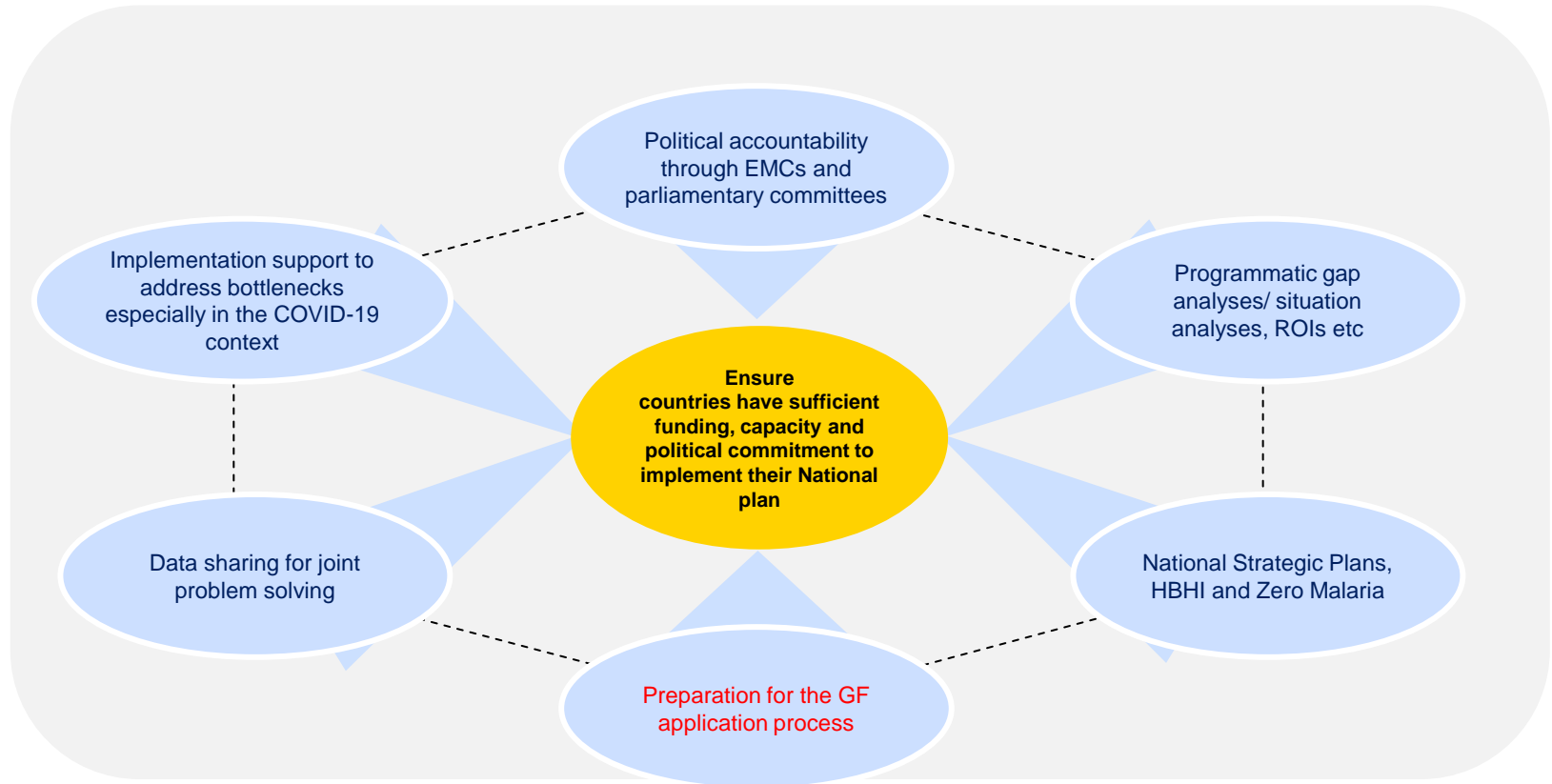
- Continue to support countries to mitigate the impact of the COVID-19 pandemic including support to address malaria upsurges, implement campaigns and address stock-outs
- Support to address bottlenecks
- Data sharing to facilitate joint problem solving
- Support implementation of HBHI approach and Zero Malaria Starts with Me campaigns

3

Resource Mobilisation

- Support Countries to initiate the process of NFM4 - GF funding applications including malaria and RSSH (CHWs/data for decision making) and positioning malaria at the forefront of PPR.
- Political accountability through EMCs and parliamentary committees
- Domestic Resource mobilization including through EMFs

Priority Areas for CRSPC in 2022



12

Questions and comments