



Partnership To End Malaria





Partnership To End Malaria

7 February 2018

The New Roll Back Malaria: Work in 2017 and plans for 2018 and beyond

Dr. Kesete Admasu

RBM's vision is of a world free from the burden of malaria.

**OUR
VISION**

**OUR
MISSION**

To support malaria affected countries to achieve the global goals and contribute to a malaria-free world.

**OUR
TARGETS**

By 2020:

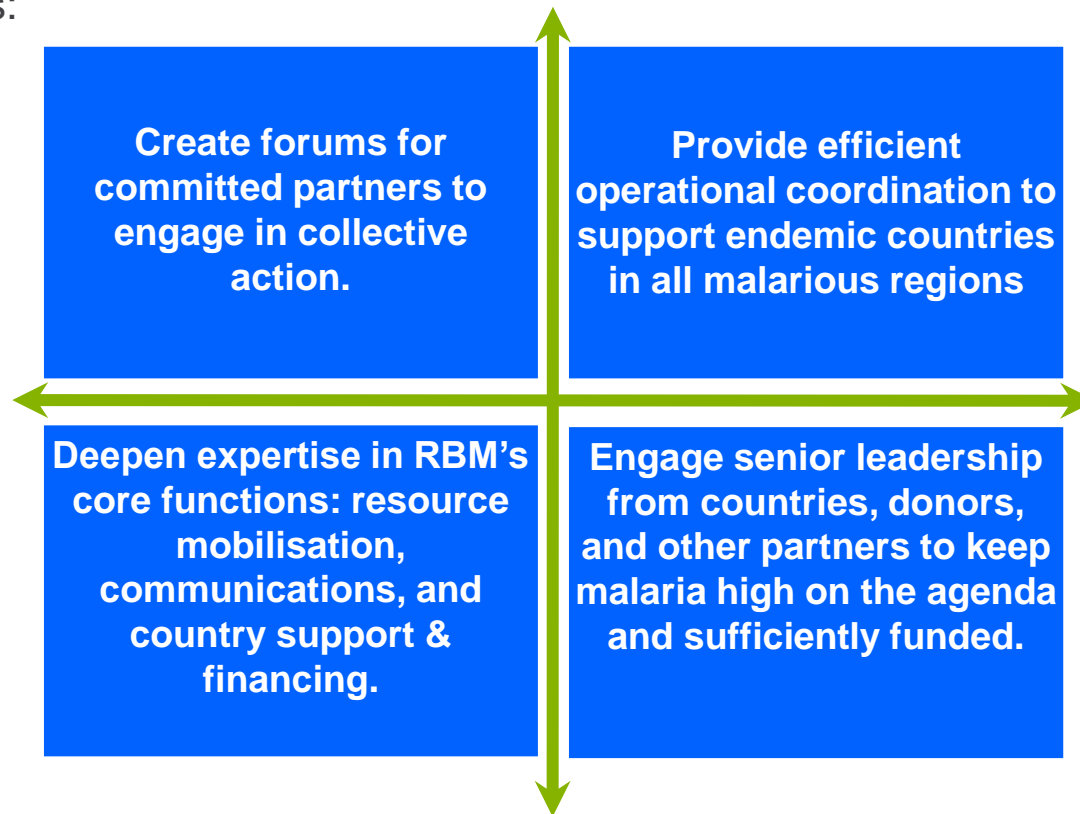
- malaria mortality rates and incidence is reduced by at least 40% compared with 2015
- that malaria does not re-emerge in countries that were malaria-free in 2015
- malaria is eliminated in a further 10 countries compared to 2015

By 2030:

- reduce malaria incidence and mortality rates globally by at least 90% compared with 2015 levels
- eliminate malaria from at least 35 countries in which malaria was transmitted in 2015
- prevent re-establishment of malaria in all countries that are malaria free

The Revitalised RBM: A Renewed Partnership

- Greater multi-sectoral engagement and cross-border collaborations will characterise the new Partnership and will enable it to realise the goals and targets of the Global Technical Strategy, AIM and Sustainable Development Goal (SDG) 3.3.
- These changes are expected to make the Partnership more able to respond to the changing needs of the SDGs environment and strengthen the Partnership's ability in the following ways:



RBM Partnership to End Malaria

The largest global multi-stakeholder platform to fight malaria



Provides a **forum** to engage, amplify and align partners across sectors and geographies to increase progress towards the global malaria goals

Has been able to form **effective partnerships** both globally and nationally, increasing the core strength of the organisation

Partners work together to **scale up malaria-control and elimination efforts** at country level, coordinating their activities to avoid duplication and fragmentation, and to ensure optimal use of resources.

Actively aims to harness the power of the partners to ***“Achieve more, together”***

Evolving in line with the malaria landscape

Focus on:

- Accelerating progress
- Maintaining the gains

2018-2020

Support achievement of 2020 & 2030 goals

- **Advocacy**
- **Resource Mob.**
- **Country Support**

Delivering on **2015 targets**, starting to focus

Focus on control: develop action plans - on **elimination**
decrease disease burden & support countries

Through:

- Regional initiatives
- Country Partnerships
- Political Prioritization
- Attract new funds

Convening the malaria community to share knowledge, put malaria on **global development agenda and escalate funding** for it

Governance Overview

The new governance model provides a number of specific opportunities and avenues for engagement, including the new Partner Committees and the continuation of Working Groups

Partnership Board	<ul style="list-style-type: none">• Governing body – with diverse, senior-level composition – that oversees Partnership operations and strategy• Accountable to Partners via regular reporting and regular, published, independent reviews• Partners nominate candidates, individually or as groups of like-minded stakeholders
CEO & Management Team	<ul style="list-style-type: none">• Day-to-day manager and face of the Partnership• Leads the Management Team in implementing the strategy and plans approved by the Partnership Board and mobilising resources required to support them.
Partner Committees	<ul style="list-style-type: none">• Formalized mechanism of direct Partner engagement and ownership to create strategy for the Partnership and deliver on its core functions• Advocacy and Resource Mobilization; Strategic Communications; Country and Regional Support
Working Groups	<ul style="list-style-type: none">• Continuing / Established as needed by partners to facilitate and streamline specific bottlenecks and coordinate partner technical area implementation efforts

The New RBM Board

Board members serve for a 3 year term (renewable once).

RBM Board Leadership

- Chair: Dr Winnie Mpanju-Shumbusho, former Assistant Director General – Malaria, HIV, TB, NTDs, World Health Organisation (WHO)
- Vice-Chair: Mr Kieran Daly, Director: Global Policy & Advocacy – Malaria, HIV, TB and the Global Fund, BMGF

RBM Board Members

- Dr Pedro Alonso, Director of the WHO Global Malaria Programme in Geneva, Switzerland.
- Professor Maha Taysir Barakat, Director-General Abu Dhabi Health Authority
- Mr Elhadj As Sy, Secretary General, IFRC
- Mr Simon Bland, Director New York Office, UNAIDS
- Prof Awa Coll-Seck, Minister of Health & Social Welfare, Senegal
- Mr Paolo Gomes, Chairman, Paulo Gomes and Partners, former Executive Director, World Bank
- Dr Richard Nchabi Kamwi, Elimination 8 Ambassador, former Minister of Health, Namibia
- Dr Altaf Lal, Senior Advisor on Global Health and Innovation, Sun Pharmaceuticals Industries
- Mr Ray Nishimoto, President of Health & Crop Sciences Sector, Sumitomo Chemical
- Dr David Reddy, Chief Executive, Medicines for Malaria Venture
- Dr Mirta Roses, Director Emeritus PAHO
- HE Yongyuth Yuthavong, Deputy Prime Minister, Thailand

Framing the RBM Partnership Priorities

1

Since its inception in 1998, the Rollback Malaria Partnership has been at the forefront of ***advocacy*** and ***partnership coordination*** to maintain and further expand investments in malaria control and elimination.

2

The period since 1998 has seen progress: the disease burden and transmission, global health architecture, international environment and leadership - notably by malaria-affected countries - have all changed considerably.

3

The Partnership has consistently developed and adapted over time in response to these changes in the global malaria context and progress in global development.

Partner Committee set-up

Overview

- Three Partners Committees:

1	Advocacy and Resource Mobilisation (ARMPC)
2	Country and Regional Support (CRSPC)
3	Strategic Communications (SCPC)

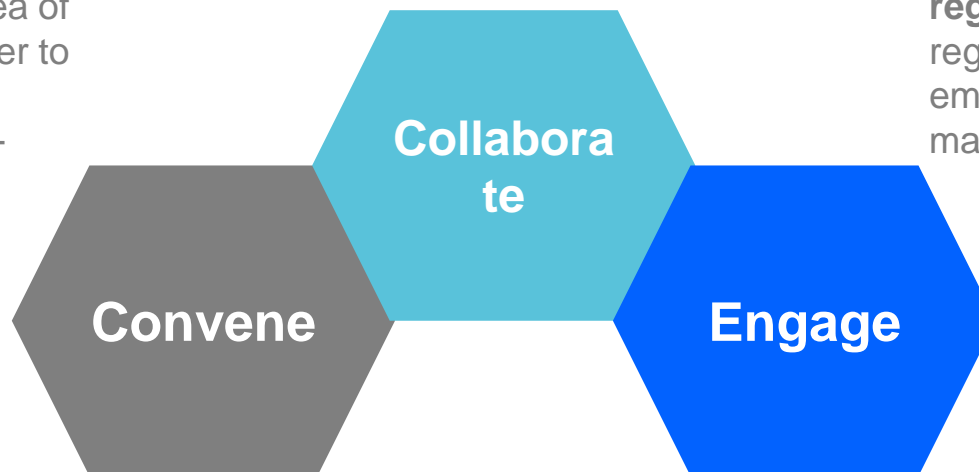
Partner Committees and their roles

Overview

- Partner Committees are intended to formalise, consolidate, and amplify the core Partnership functions as established by the Partnership Board.
- The work of the Partner Committees is coordinated by the CEO.
- Partner Committees are made up of RBM Partners who commit to dedicate time of their staff and other resources to work on Committee issues.

Role

Convene Partners with an interest in the focus area of each Committee in order to then facilitate communication and co-ordination of activities.



Engage and relate with regional entities to ensure regions and countries are empowered to address malaria.

Collaborate with Partner Committees – both directly and through the CEO / Management Team – to obtain necessary inputs, avoid duplication of efforts, and to resolve any concerns over responsibilities

Partner Committee key features

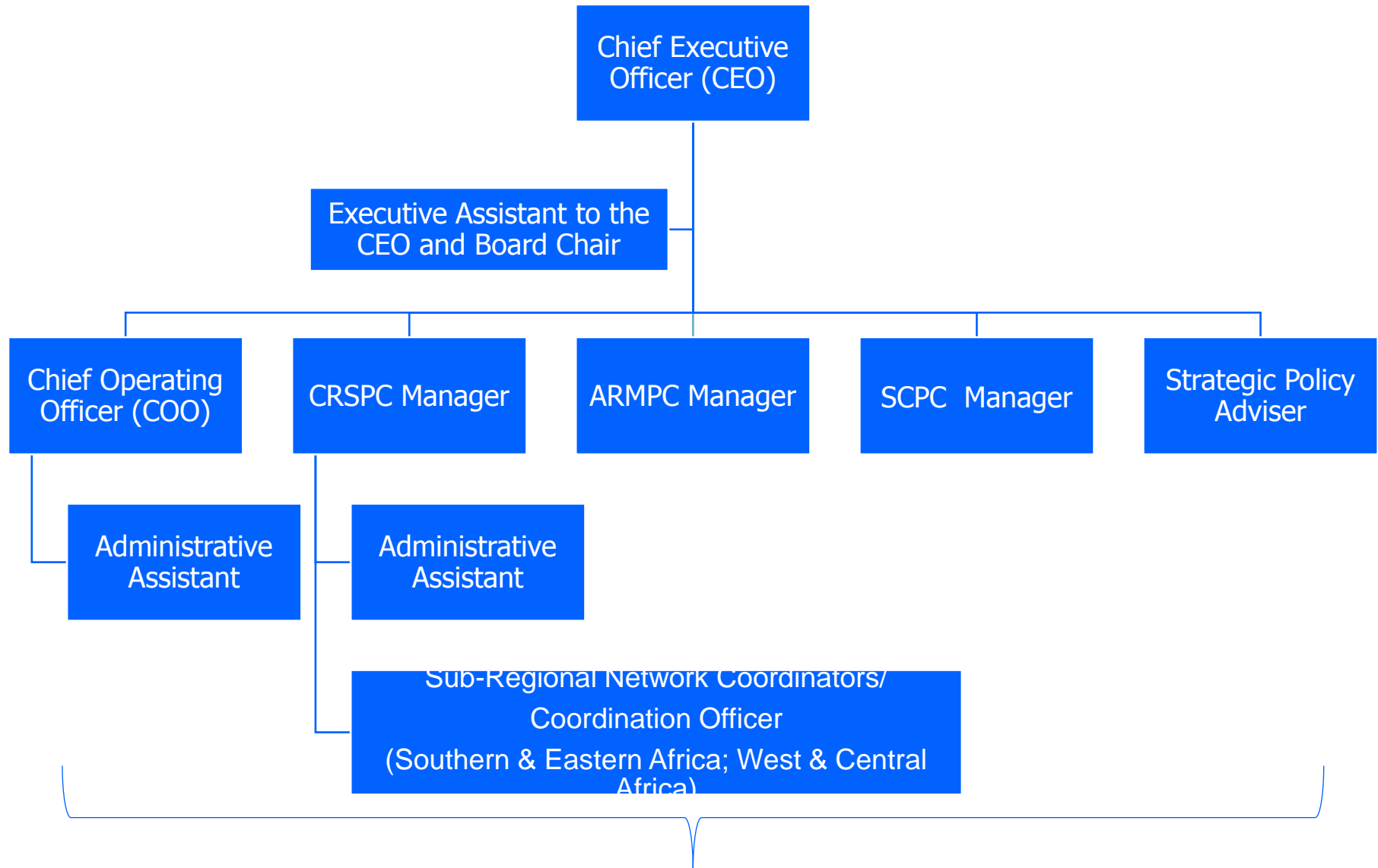
- **Operating Principles: Transparency, Diversity, Flexibility and Accountability**
- **Governance** – Detailed governance arrangements of Partner Committee operation can vary, however, they are expected to include at a minimum:
 - Two dedicated Co-Chairs
 - Steering Committee (SC)
 - Workstreams (optional)
 - General Membership of global partners who have applied to join the Partner Committee and who have expressed a willingness to dedicate time and bring their knowledge, expertise and assets to the Committees' work.
- **Communication and Engagement** – Partner Committees should ensure regular communication and engagement with their General Membership on at least a quarterly basis. PC Co-Chairs take part in monthly coordination calls chaired by the CEO.
- **Decision-making** – Wherever possible, the decision-making processes of Partner Committees should prioritise mechanisms to reach consensus through discussion rather than a reliance on Committee voting.

Working Groups

- Partnership Working Groups are established to convene and coordinate Partnership members around a defined technical intervention area to facilitate learning and share best practices.
- Self financing and self-convening
- Work is aligned with, and complements, that of WHO
- There are currently 5 accredited RBM Working Groups:

1	Social and Behaviour Change Communication Working Group (SBCC WG)
2	Case Management Working Group (CMWG)
3	Monitoring and Evaluation Reference Group(MERG)
4	Malaria in Pregnancy Working Group (MiPWG)
5	Vector Control Working Group (VCWG)

RBM Partnership to End Malaria - Secretariat



New RBM Partnership to End Malaria Brand

- Following the Board's approval, the new RBM branding was unveiled during the 2017 UN General Assembly in New York.
- All RBM Partners were informed via a special newsletter and feedback has been positive.



RBM Partnership Strategic Plan 2018 - 2020



The Strategic Plan has gone through a robust iterative process, and was approved by the Partnership Board in November 2017.

Keep Malaria high on Political Agenda

- All Party Parliamentary groups on malaria
- “Zero Malaria starts with me” campaign
- Inclusive and multisectoral Partnerships
- Leveraging key moments in 2018
 - ✓ Multilateral Initiative on Malaria (MIM) Conference (15-20 April - Dakar)
 - ✓ Commonwealth Heads of Government Meeting (16-20 April - London)
 - ✓ World Malaria Day (25 April - worldwide)
 - ✓ WHO World Health Assembly (22-31 May – Geneva)
 - ✓ Malaria World Congress (1-5 July - Melbourne)
 - ✓ 20th Anniversary Celebration (30 October)



Regional Approach

ALMA and RBM Partnership

- An initial discussion with RECs in Africa
- Strong interest to collaborate and put in place mechanisms to support the malaria work
- A tripartite MOU will be signed soon among ALMA, RBM, and RECs

WHO and RBM Partnership

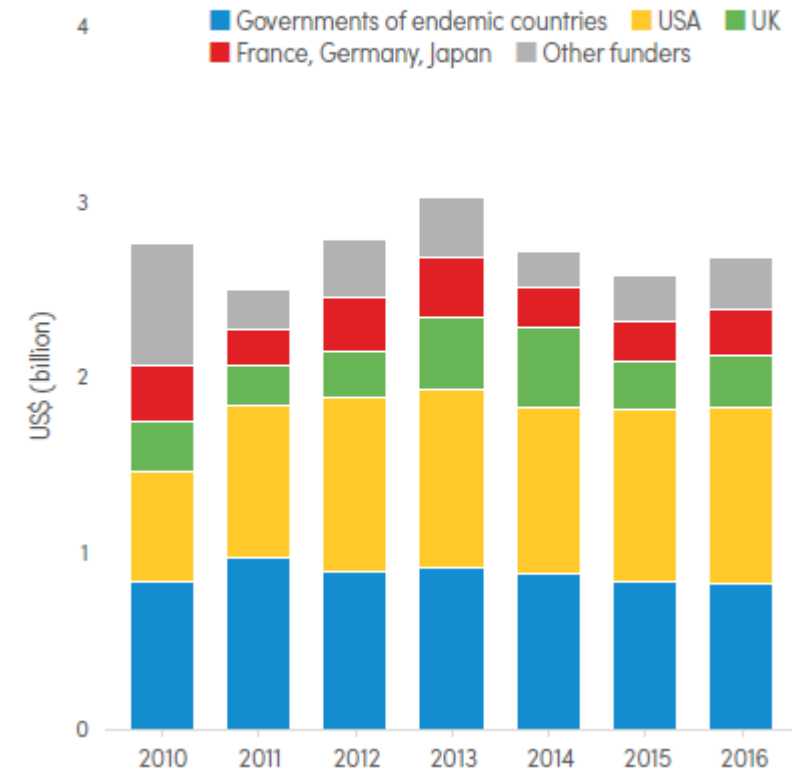
- A regional malaria elimination initiative in the Sahel region will be established in 2018
- The platform will help accelerate the implementation of focused interventions toward elimination in the Sahel countries



Increase the financing envelope for malaria

- There is a huge demand for substantial increase in malaria financing in order to meet the ambitious global malaria goals.
- Currently, malaria financing is derived from three major sources:
 - **domestic financing** (mainly in health systems and the health workforce);
 - **bilateral and multilateral** sources, much of which is currently used for commodity procurement;
 - **out-of-pocket** expenditure at personal and household level.
- The 2017 World Malaria Report provides a comprehensive breakdown of funding sources:
 - ✓ In 2016 **total funding** for malaria was USD 2.7 billion, representing only 21% of 2020 milestone of USD 6.5 billion.
 - ✓ Countries with endemic malaria provide nearly one third (31%), including USD 586 m for NMCPs and USD 241 m (declined by 11 % since 2010) was expenditures calculated for malaria patient care.
 - ✓ More than half (57%) of malaria funding is channelled through the Global Fund.
 - ✓ In 2016 malaria funding: 38% of all funding coming from the US, 11% from the UK and the remainder (approx. 21%) half of which comes from France, Germany and Japan.

Investments in malaria control and elimination by source of funds¹ (constant 2016 US\$), 2010–2016



Malaria Finance Taskforce (MFTF)



- The aim of the task force is to assist national health sector leadership in the development of a robust “investment case” to seek increased fiscal-space for malaria funding, to apply innovative financing solutions, and to mobilize influential leadership to promote increasing domestic resources.
- The MFTF held its first meeting on 14 September, via teleconference.
- The meeting served as the first brainstorming session on the proposed RBM country-focus on expanding the domestic financing space.
- The spirit behind this work is to ensure that our advocacy and technical work combined can be steered into practical applications through 4/5 country pilots (currently looking at Mozambique, Sudan, Zambia and DRC)
-

Engagement with China

Malaria Thematic Session at Health Silk Road Meeting

Objective of China's engagement

- Forge strong partnership and substantially increase the role of China in the fight against malaria,
 - ✓ with its support aligned to national malaria program needs –
 - ✓ contributing everything from innovation,
 - ✓ to provision of quality-assured commodities and
 - ✓ building capacity in surveillance and implementing IRS operations.



RBM Partnership-China Steering Group

Purpose of the SG

- Design and launch a malaria elimination demonstration project in 3-4 pilot countries with the aim of shaping China's policy sphere in the malaria space.
- Support the development of local manufacturing of malaria products in Sub Saharan Africa.
- Organize a high-level Malaria Summit in 2019. Organize a side event to celebrate Chinese manufacturers that have WHO prequalified products.





Partnership

To End Malaria

5 February 2018

Thank you, find out more
visit rollbackmalaria.org
[@RollBackMalaria](https://twitter.com/RollBackMalaria)

RBM Partnership to End Malaria
3rd floor, TCS Building, Chemin de Blandonnet 2, 1214 Vernier, Geneva,
Switzerland. Info@rollbackmalaria.com