

Entomological Monitoring & IVM Work Stream Meeting
8TH Annual Meeting of RBM Vector Control Working Group (VCWG)

Towards a More Efficient Vector Control Delivery

What are the Bottlenecks

28 – 30 January 2013,
Geneva, Switzerland

PLENARY SESSION A:

Towards a More Efficient Vector Control Delivery

What are the Bottlenecks & Why?

Main Areas of Consideration

INTERNAL TO DELIVERY

1. PROGRAMMATICS

- a. >
- b. >

2. TECHNICAL

- a. Quantification & timing of procurement
- b. Targeting constrains
- c. >

3. ..?

4. ... etc

EXTERNAL TO DELIVERY/SYSTEM ISSUES

1. POLICY CONFLICTS

2.?

3.?

OTHER

How do these factors apply to the delivery of current interventions?

Impact on overall Vector control programs

Future of Vector Control – Getting Easier or More Complex?

??
Changing eco-epidemiology



??

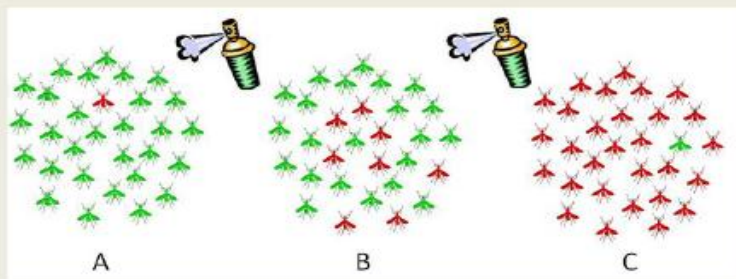


Slow market entry of new tools



Increase efficiencies – errrrr????

??



Increasing resistance

??



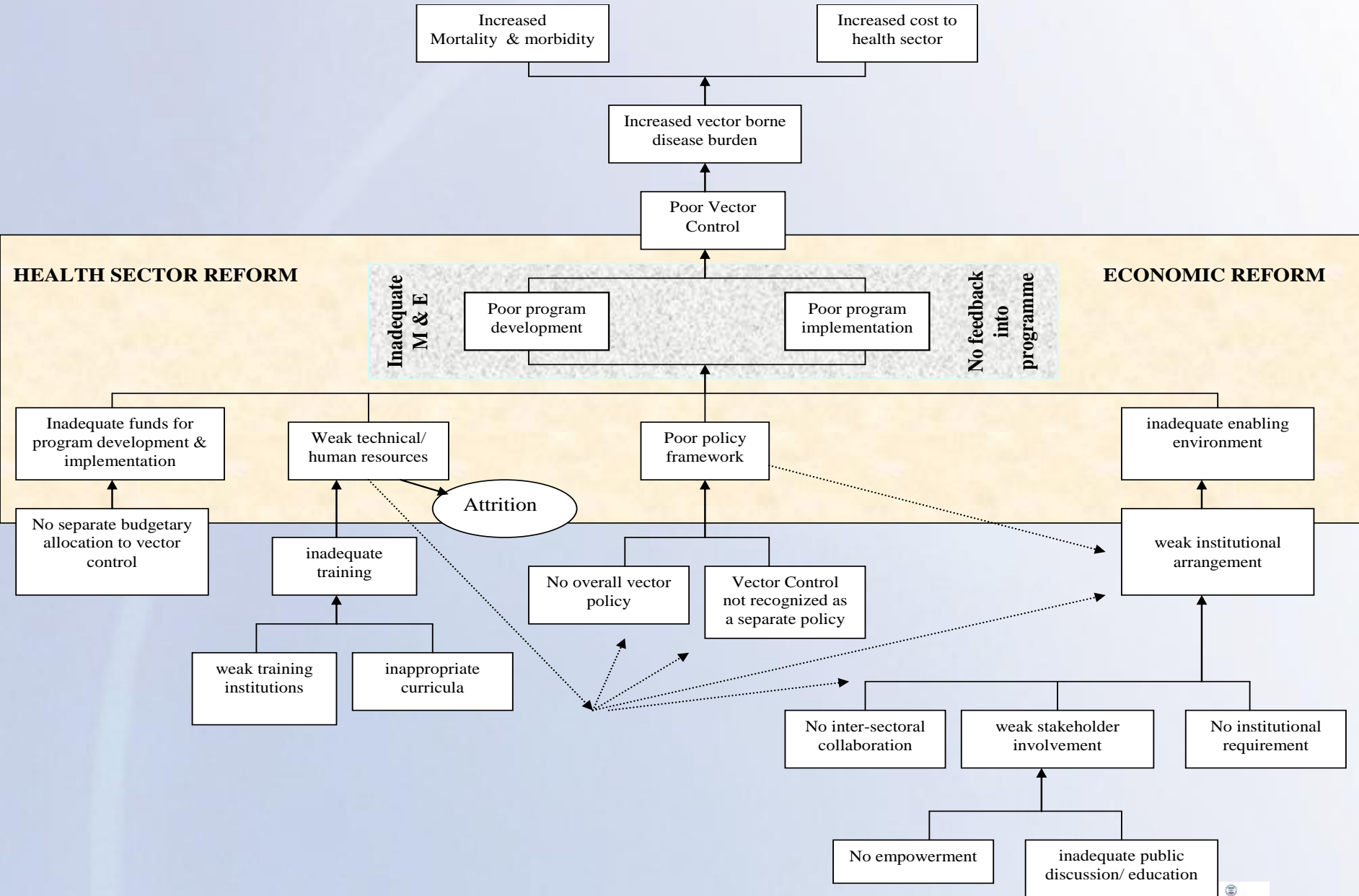
??

??

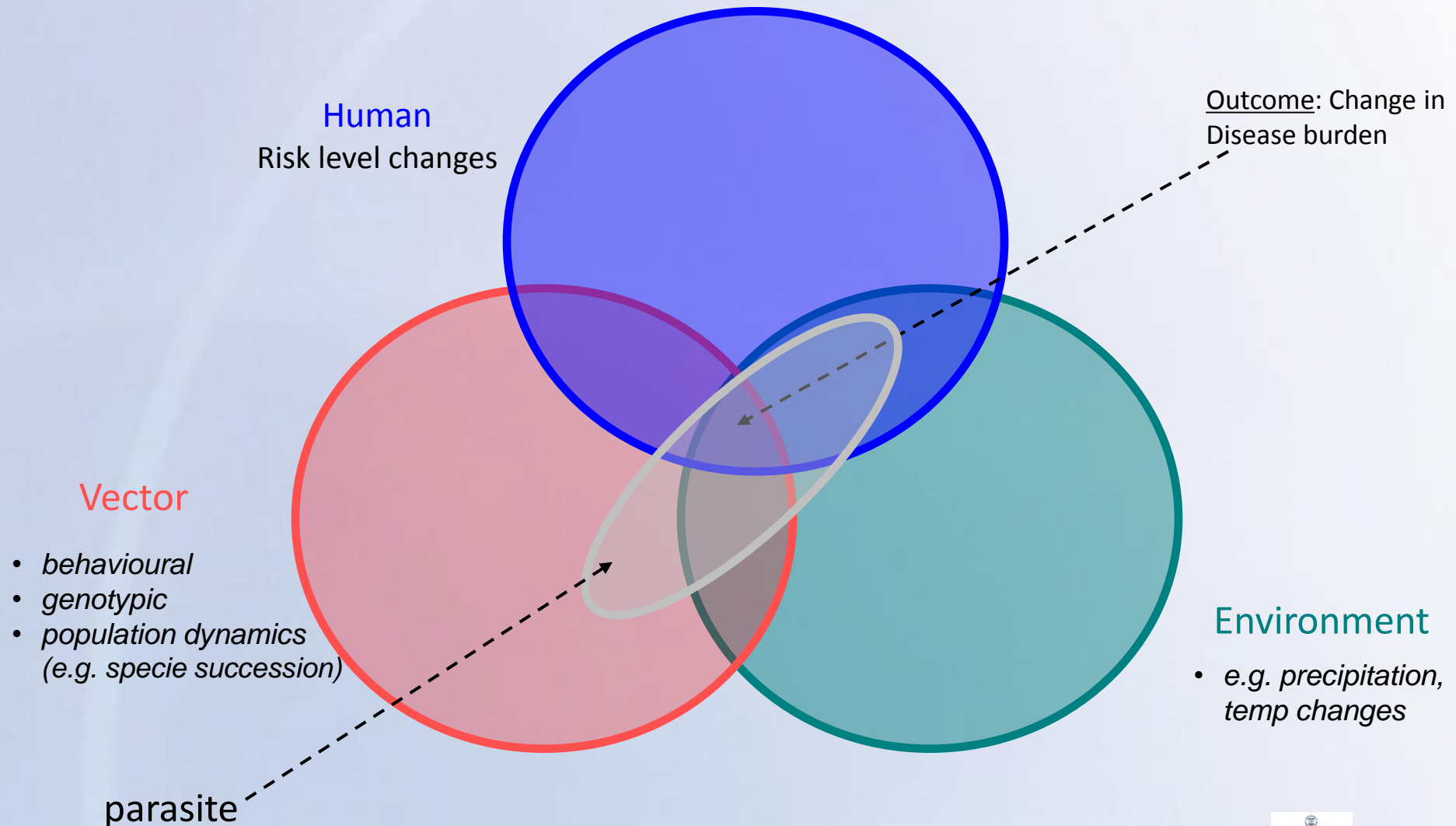


Increasingly exophagy & exophily

UNDERSTANDING SYSTEM PRIORITIES FOR VECTOR BORNE-DISEASE CONTROL



VC Challenges: Changing local disease eco-epidemiology



PLENARY SESSION B:

Towards a More Efficient Vector Control Delivery

Priorities for Overcoming Bottlenecks

Expected Output

- To identify and categorize the major factor limiting achievement of maximal efficiency in Vector control
- To propose and prioritize opportunities for addressing these issues

Follow-on work stream Activity

- ID follow-on activity
- Agree on deliverable(s)
- Propose partner roles and other related issues