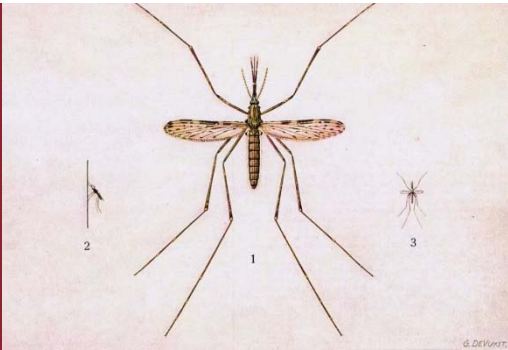


BILL & MELINDA
GATES foundation



THE CRITICAL ROLE OF VECTOR IDENTIFICATION

Intervention Delivery, Integration and Capacity
Strengthening Work Stream, RBM Vector Control
Working Group

February 3, 2016

Dan Strickman
Senior Program Officer, Vector Control

■ THIRTEEN MINUTES OF MESSAGE

Agenda Item

BLUF: Identification changes assumption to knowledge for risk assessment, targeting, and evaluation

RISK ASSESSMENT: To know the problem to be solved

TARGETING: To direct control efforts where they are needed

EVALUATION: To know how well control worked and to produce historical record

TAXONOMY AND SYSTEMATICS: Infrastructure desired and required

■ RISK ASSESSMENT

To know the problem to be solved

- What are the vector species?
 - Distribution
 - Spatial: Egg, larva, male, female
 - Seasonal
 - Diel: Biting, oviposition, sugar feeding, humidity seeking
 - Vectorial capacity
- Case example: Honduras

- *An. (Nyssorhynchus) albimanus*

- *An. (Anopheles) vestitipennis*

- *An. (Anopheles) eiseni*

- *An. (Anopheles) pseudopunctipennis*

- *An. (Kerteszia) neivai*

- *An. (Nyssorhynchus)*

- *An. (Nyssorhynchus) darlingi*

- *An. (Anopheles) crucians*

- *argyritarsis*

■ TARGETING

To direct control efforts where they are needed

- Where are the vectors today?
 - Larval sites for treatment
 - Priority homes for IRS
 - Priority areas for space sprays
 - Timing for each
- Where will the vectors be later?
 - Planning resources
 - Vector control
 - Medical

■ EVALUATION

To know how well control worked and to produce historical record

- Inspection
 - Priority to correct failed control based on risk of species
 - Determine retreatment
 - Estimate the current problem
- Historical record
 - Resource justification
 - Changes in distribution and habits that affect transmission
 - Changes in species composition
 - New species

■ SYSTEMATICS AND TAXONOMY

Infrastructure desired and required

- Museum and academic level
 - Reference
 - Ultimate authority
 - Common source of new species
 - Systematics
- Laboratory and operational level
 - Personnel trained in morphology and molecular identification
 - Small collections
- Field personnel trained for sight identification

■ THANK YOU

