



# Malaria-Nutrition Integration in Tanzania using multi-sectoral approach

Team members;



# Presentation Outline

- ☐ Background/Overview
- ☐ Objectives
- ☐ Methodology
- ☐ Results
- ☐ Conclusion/Next steps

## Background/overview of the project

- Multisectoral approach to community services
- Village Health and Nutrition Days (VHND) implemented since 2016
- Opportunity for introduction of Malaria services
  - High attendance
  - Support from mother facility

# Background/overview of the project

**Section 1: WASH and Environmental Sanitation**



**Section 2: Registration**



**Section 3: Nutrition Services**



**Section 4: Health Services**





# Background/overview of the project

**Section 5: ECD Corner**



**Section 6: Cooking  
Demonstration**



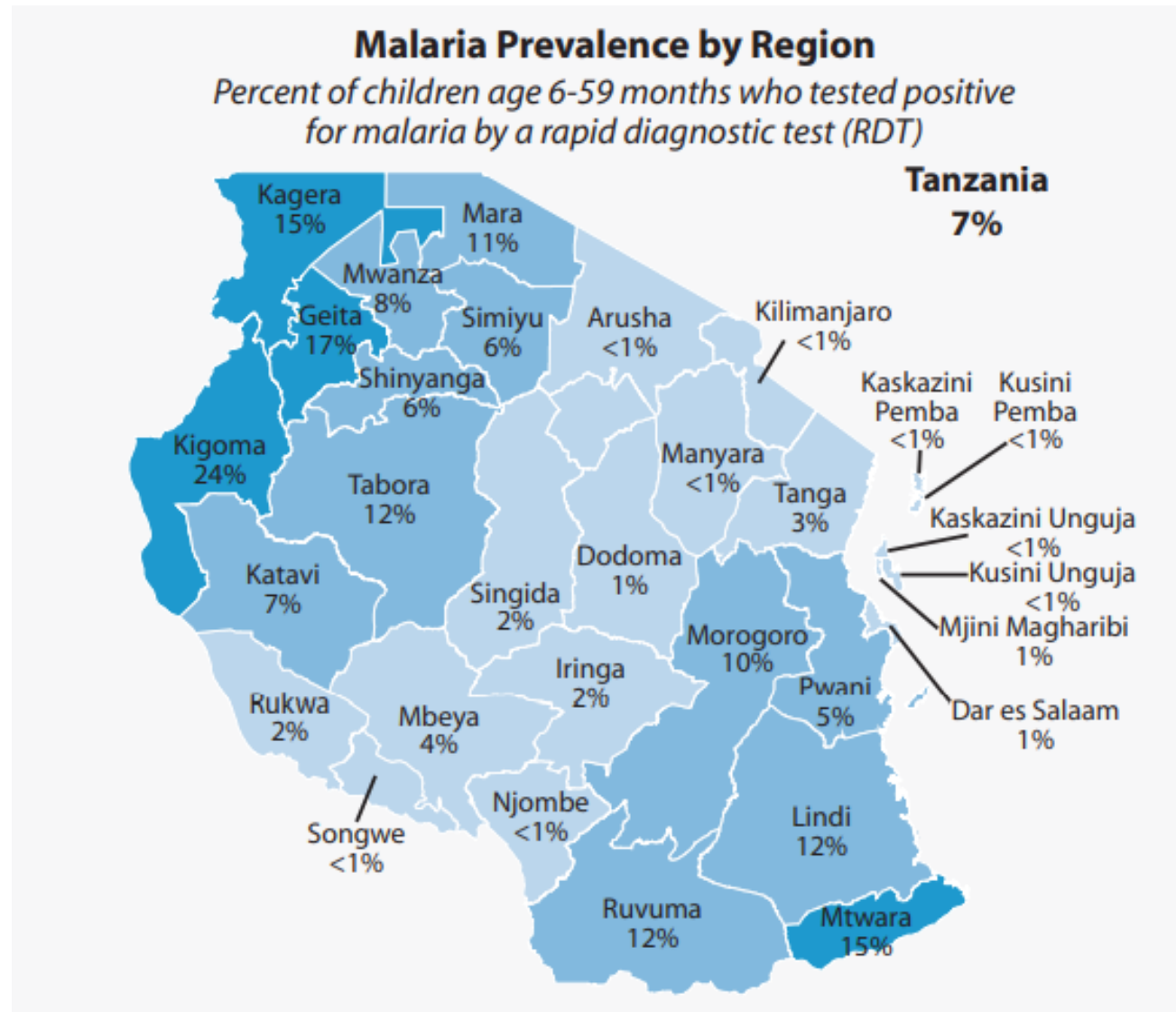
**Section 7: Agriculture and Food  
Security**



**Section 8: Reporting and  
feedback**



# Background/overview of the project



# Objectives

- Reduce the morbidity and mortality due to complications of malaria in children under 5yrs
- Share learning of feasibility and effectiveness of integrating services
- Advocate for the use of VHND as a platform for integration of services for children under 5 and their caregivers

# Implementation Plan

- Document Review
  - Malaria Prevalence
  - Learning from Madagascar
- Stakeholder Identification and analysis
- Introduction to Government
- Formation of Malaria-Nutrition governing body





# Implementation Plan

- Review of Standard Operating Procedures
- Introduction of project to Regional and Council Health management team
- Orientation of the SOP to Nutrition Officers



## Achievements

- Buy in of the government and all other stakeholders
- Incorporation of Malaria services in the SOP for VHND
- Established a working group
- CORPS identification
- Oriented 7 District Nutrition Officers

## Conclusion/Next steps

- Training of CORPs on Malaria Community Case Management (mCCM)
- Community Health Workers and Community Leaders to be sensitized and capacitated to build demand-Implementation for both malaria-nutrition interventions
- Joint supportive supervision & coordination
- Learnings to be shared with MoH – policy reviews and scale up

# Questions

# Thank You

