



ELIMINATION 8

ANGOLA • BOTSWANA • ESWATINI • MOZAMBIQUE
NAMIBIA • SOUTH AFRICA • ZAMBIA • ZIMBABWE

Malaria Routine Data in Action: Cross-border collaboration and surveillance initiatives

07 September 2023

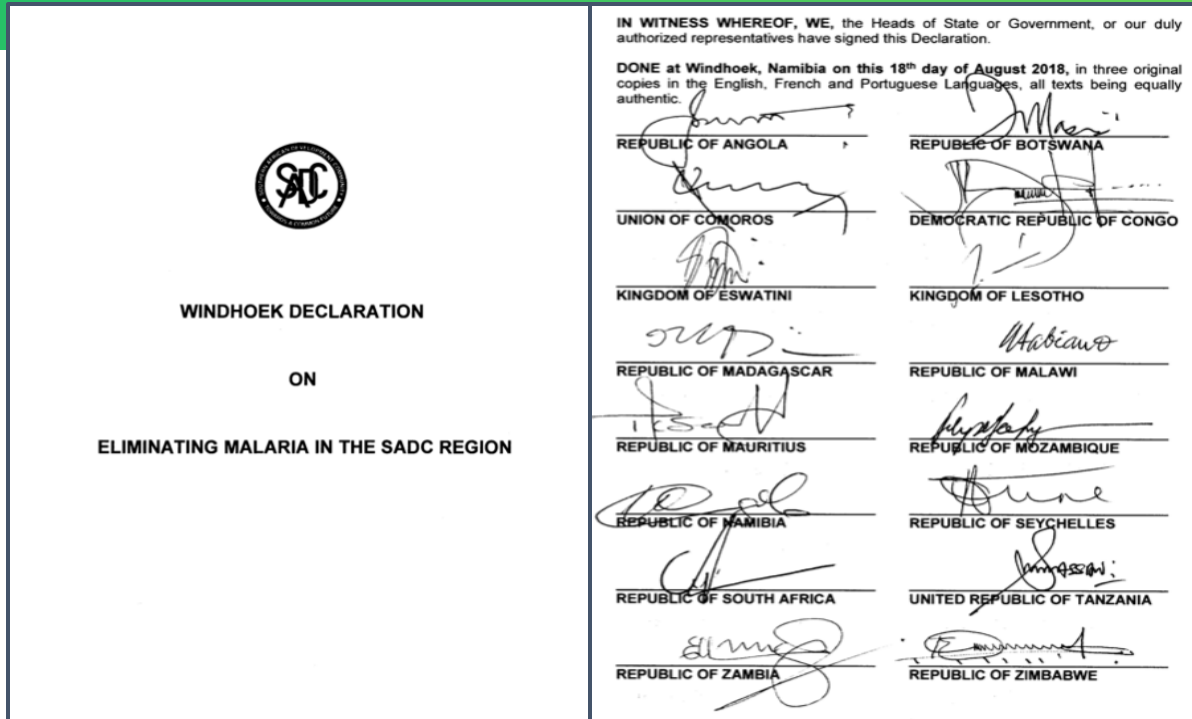


Outline

- ★ The SADC Malaria Elimination 8
- ★ Tools for multi-country malaria surveillance
- ★ Innovations and Ideas
- ★ Summary of regional indicator tracking and action



Advocate for increased political support for malaria elimination



SADC's mission is to bring together southern African nations to chart a bold vision for their shared future. Drawing on each country's own unique strengths, SADC member states collaborate on common goals, an approach that is also critically important in the fight to eliminate malaria.

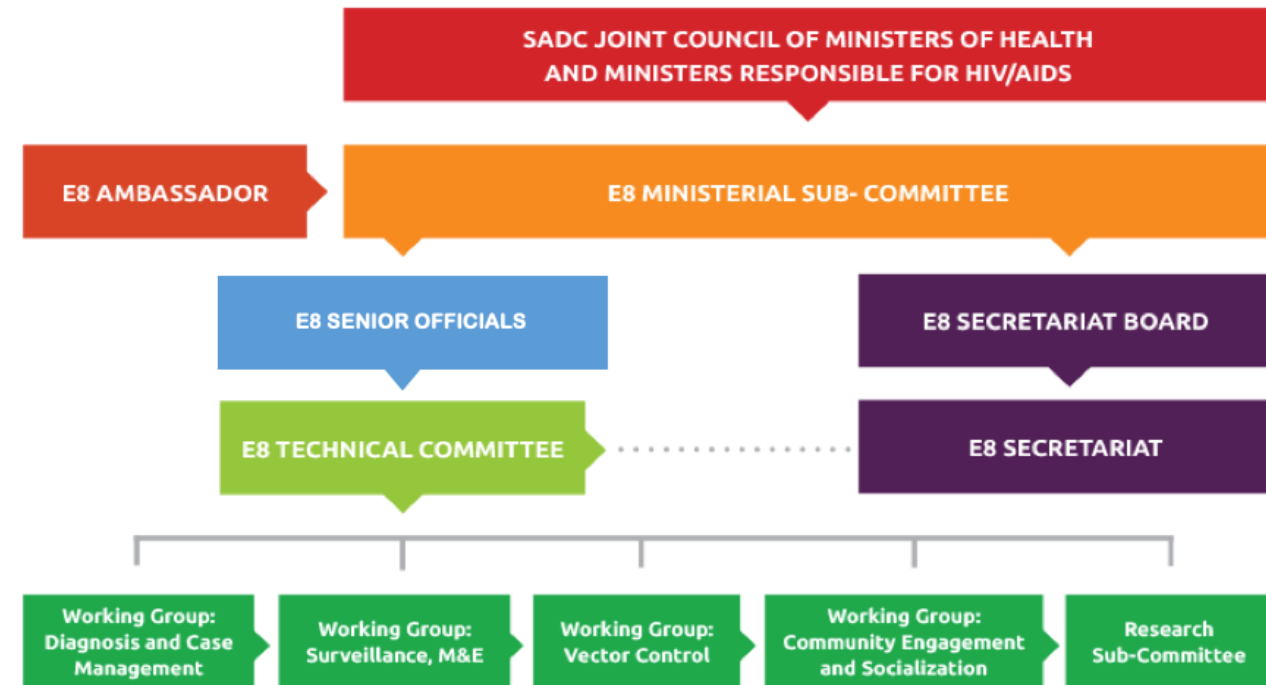
Eliminate Malaria in ALL of SADC by 2030



The SADC E8 Initiative as an example of cross-border coordination and engagement

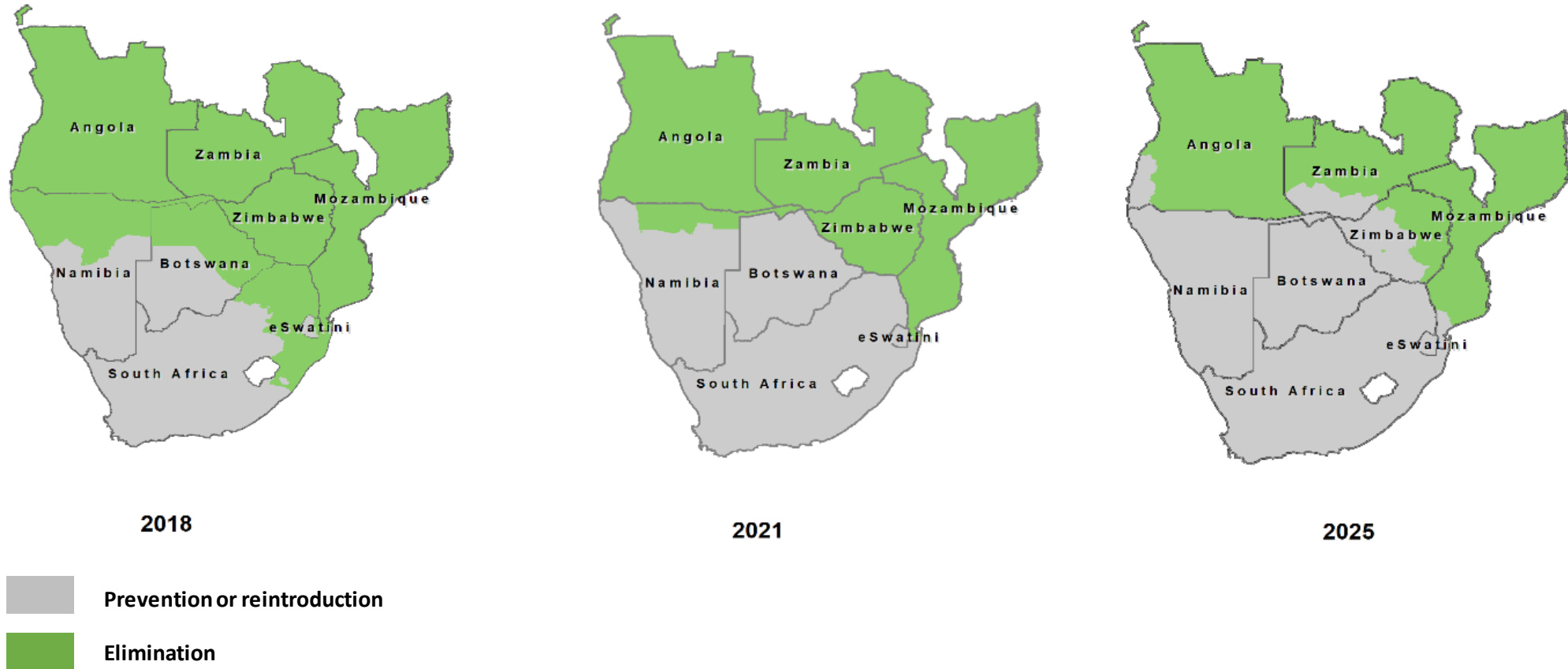
Mandate

- 1. COORDINATE** - Regional coordination to achieve '0' across E8 by 2030.
- 2. ADVOCATE** - Elevate and maintain regional malaria high on leadership agenda.
- 3. HARMONISE** - Promote knowledge management and sharing, quality control, and policy harmonization leading to elimination.
- 4. ENGAGE** - Facilitate reduced cross-border malaria transmission.
- 5. SUSTAIN** - Ensure sustainable financing for elimination



The Envisaged Progression of Elimination in the SADC E8 Region

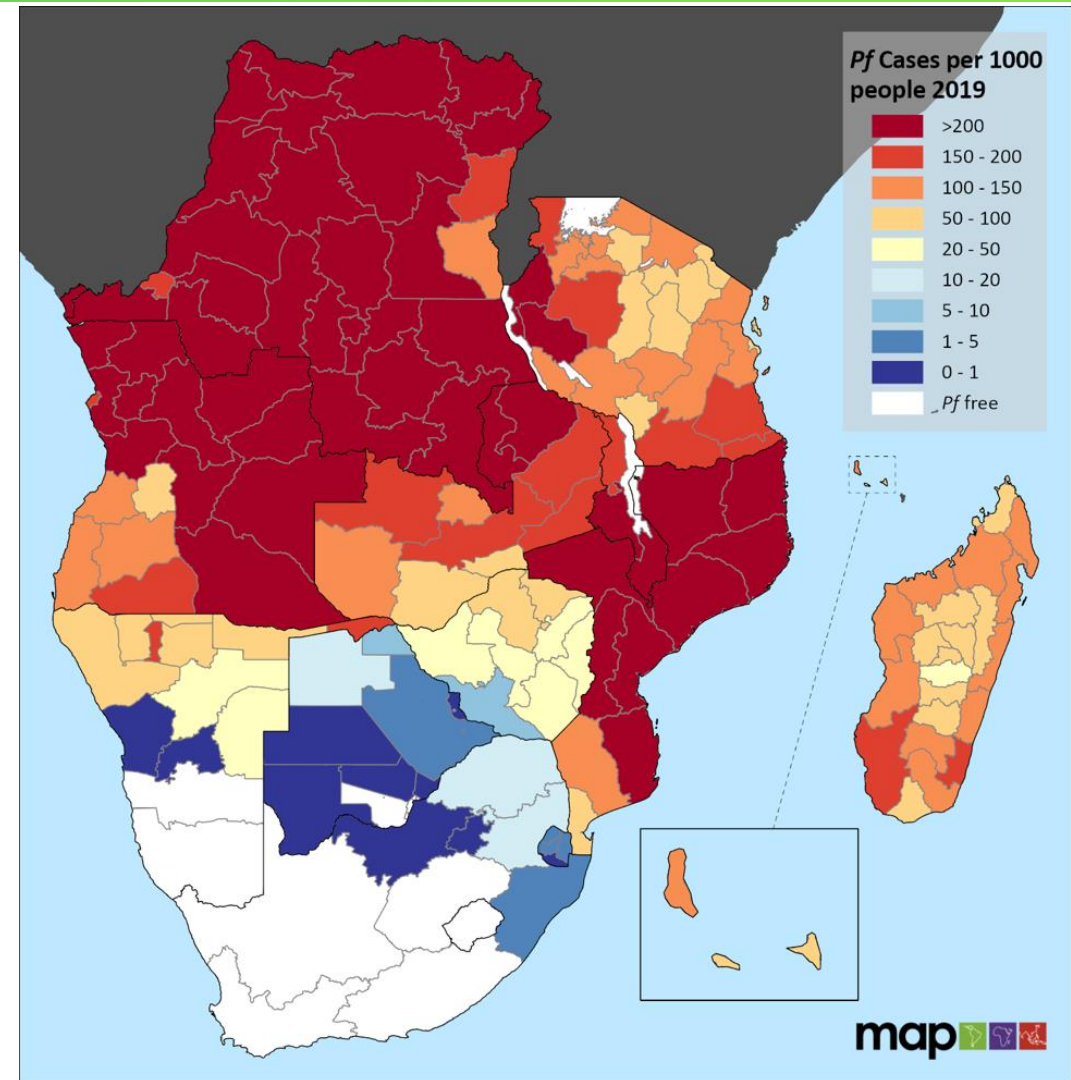
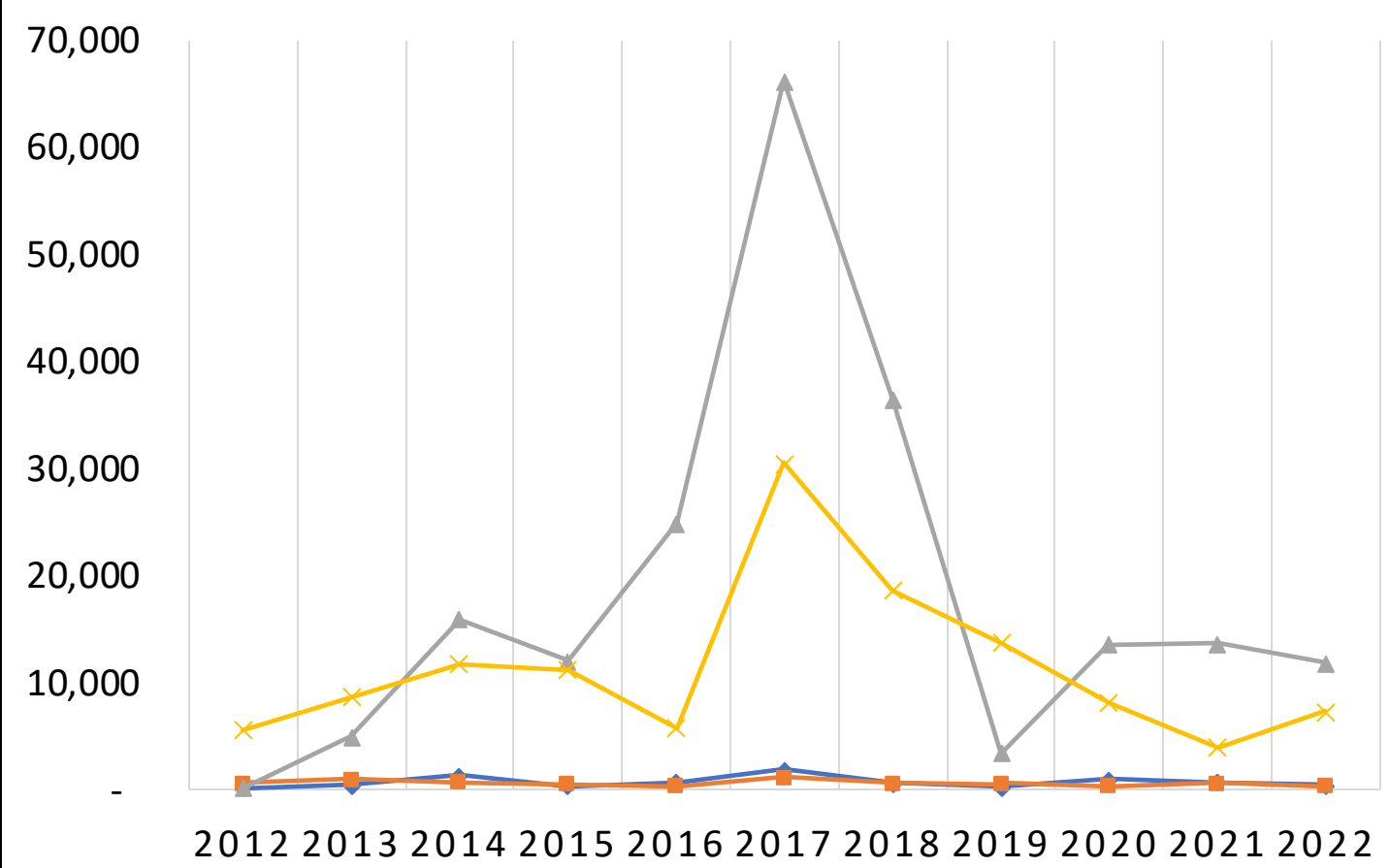
Malaria Elimination Transition in the E8: 2018 - 2025



Southern Africa Malaria Patterns

ANNUAL TRENDS IN FRONTLINE E8 COUNTRIES

— Botswana — Eswatini — Namibia — South Africa

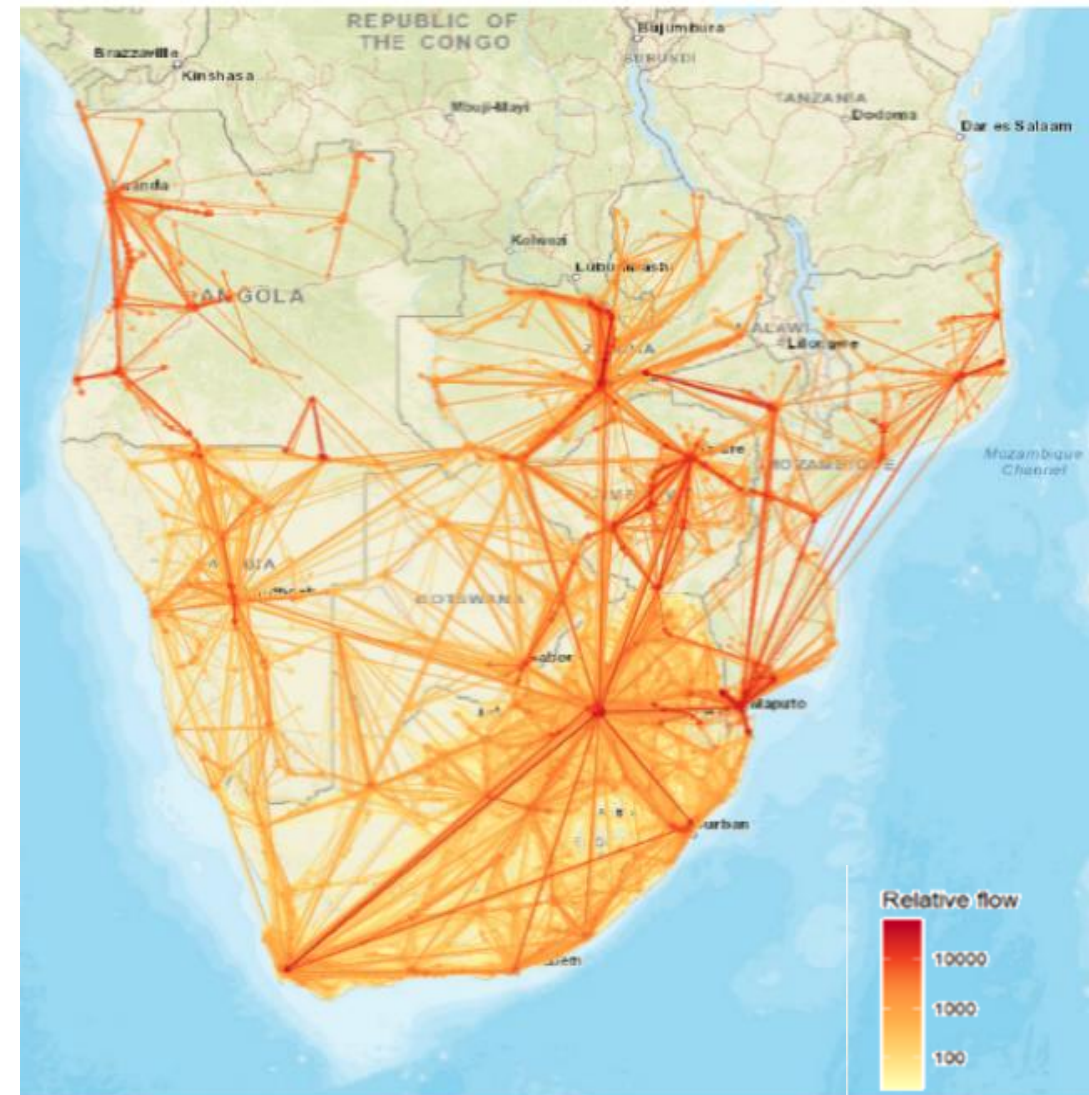
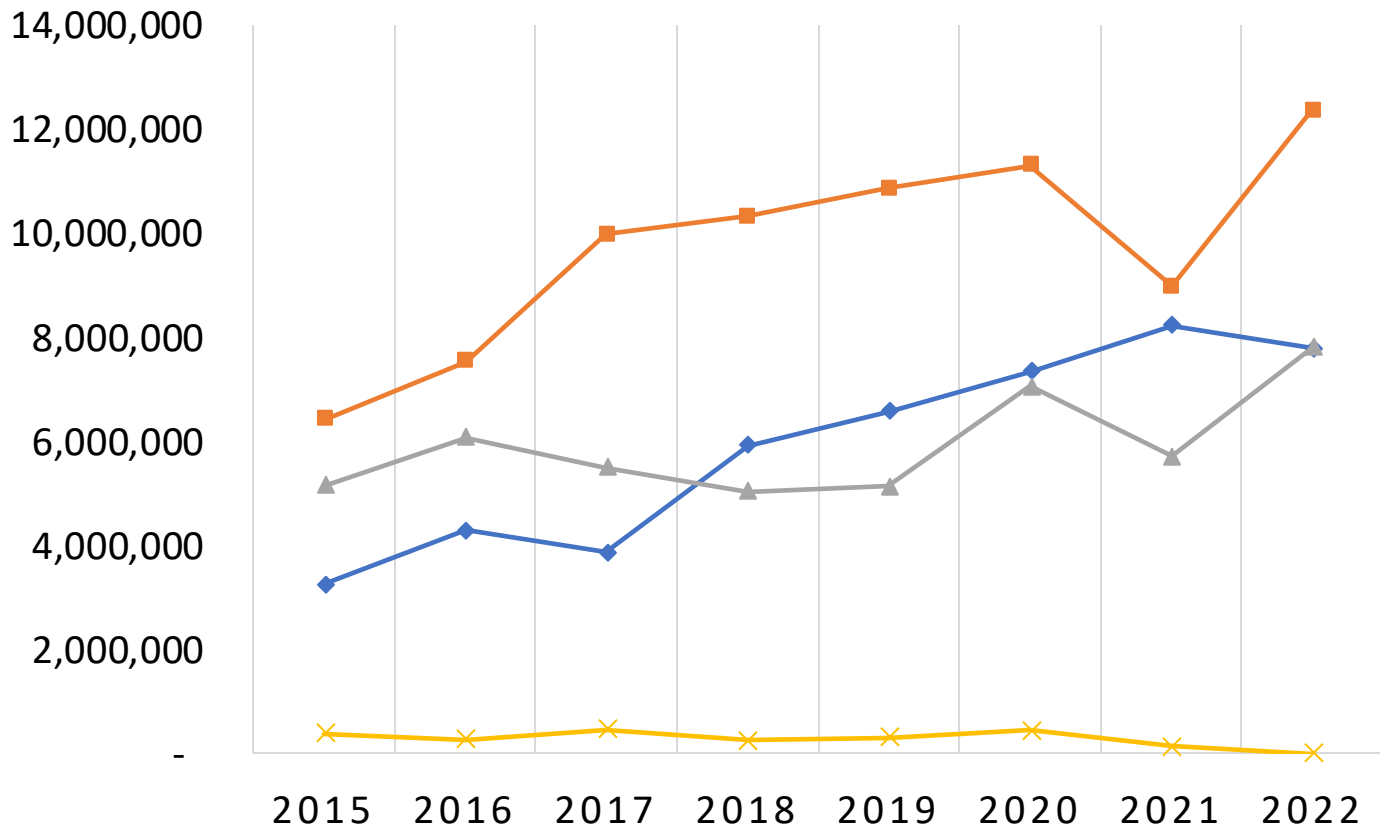


Hay SI, Gething PW et al, Malaria Atlas Project, 2019

Southern Africa Malaria Patterns

ANNUAL TRENDS IN SECOND-LINE E8 COUNTRIES

—◆— Angola —■— Mozambique —▲— Zambia —×— Zimbabwe



Ruktanonchai, N. et al. Malaria Atlas Project. 2014.

Outline



Tools for multi-country malaria surveillance

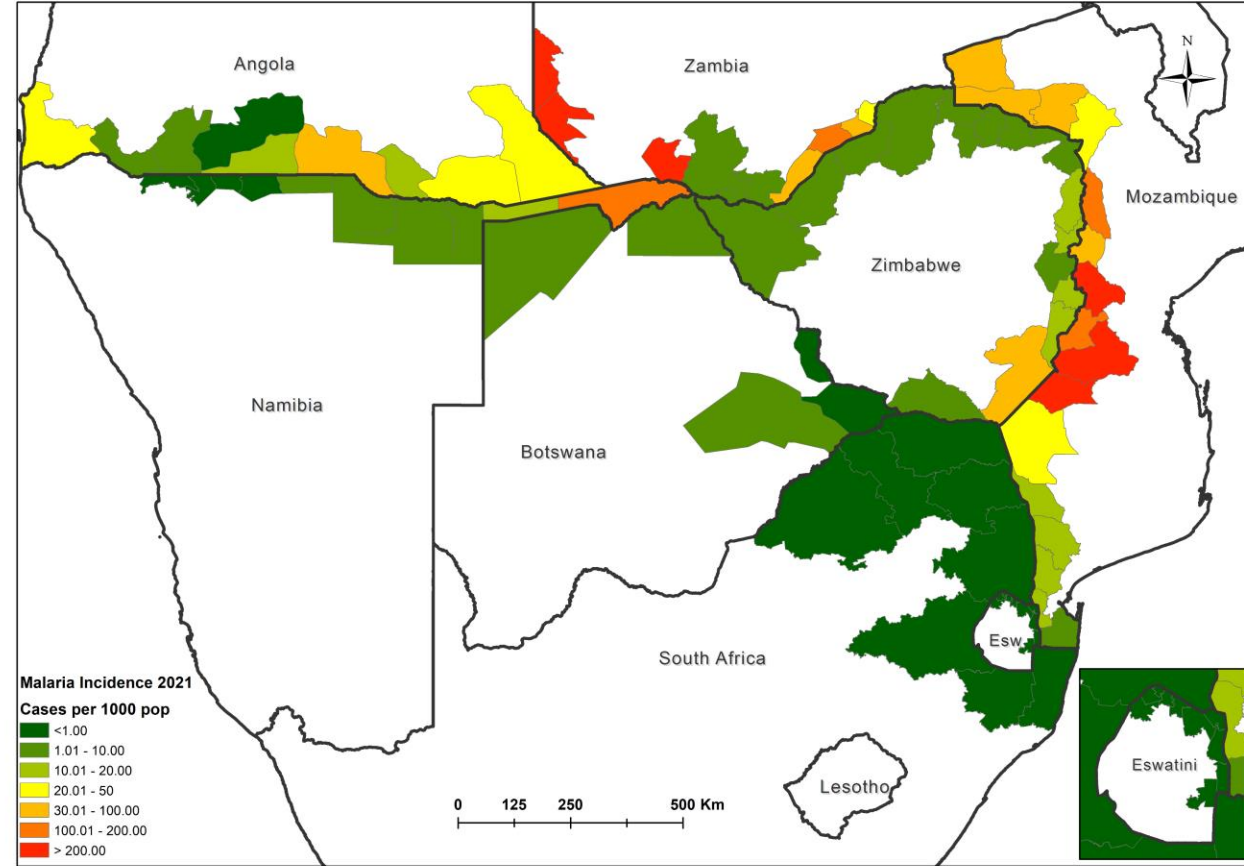
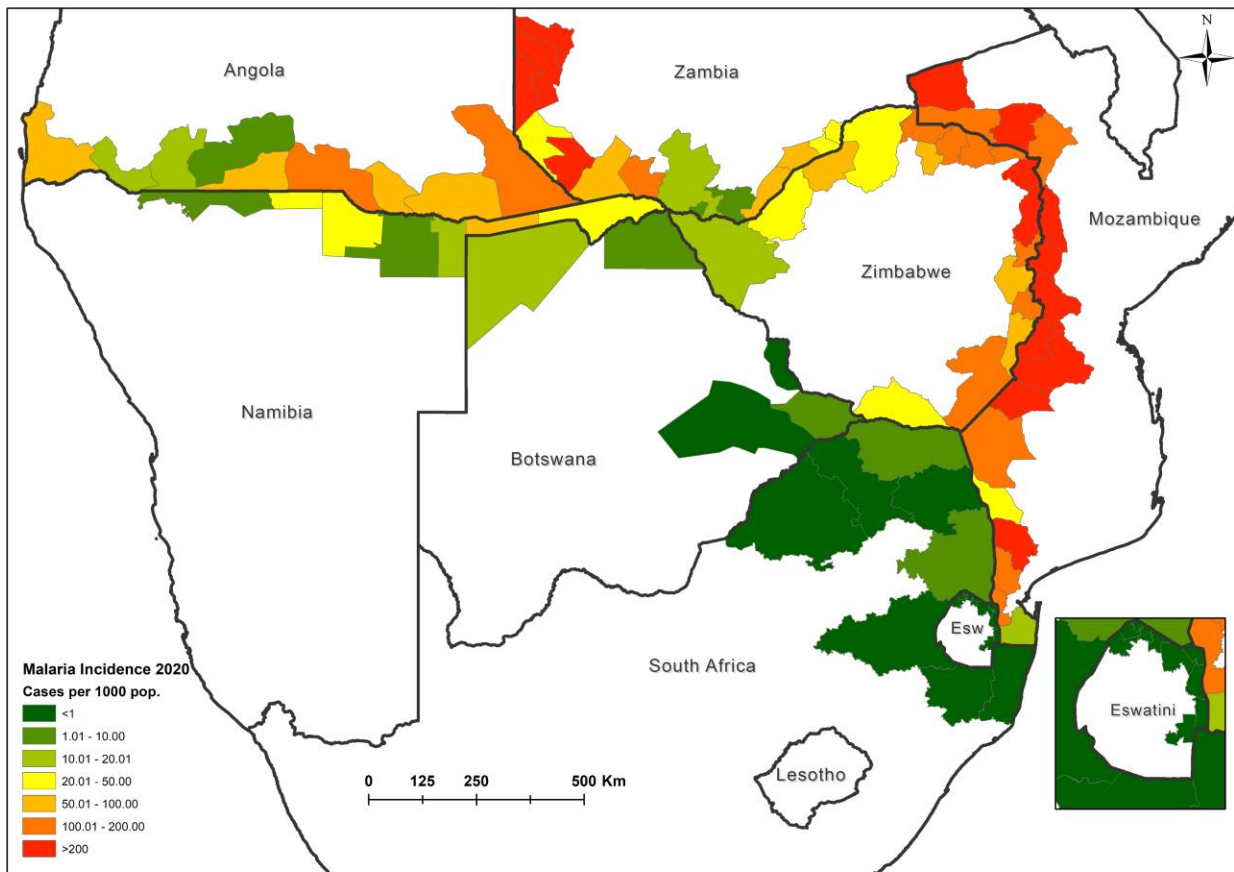


Tools used for cross-border malaria surveillance – Data sharing

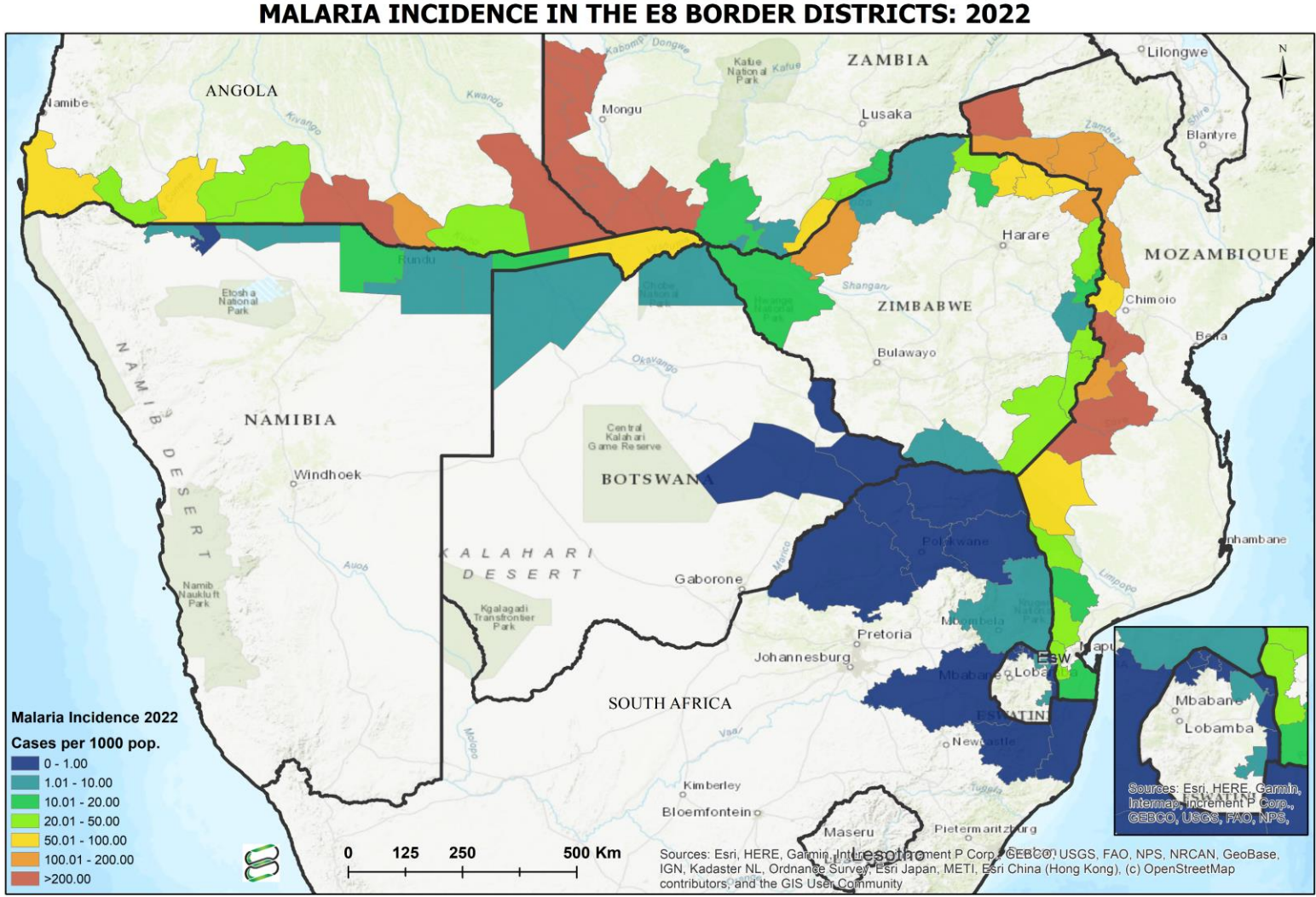
2022	January			February			March			April		
Border District	REPORTED CONFIRMED CASES	REPORTED LOCAL CASES	DEATHS	REPORTED CONFIRMED CASES	REPORTED LOCAL CASES	DEATHS	REPORTED CONFIRMED CASES	REPORTED LOCAL CASES	DEATHS	REPORTED CONFIRMED CASES	REPORTED LOCAL CASES	DEATHS
Bobirwa	0	0	0	0	0	0	6	6	0	1	1	0
Chobe	6	6	0	11	11	0	4	4	0	16	16	0
North East	0	0	0	0	0	0	0	0	0	0	0	0
Okavango	46	46	0	46	46	0	21	21	0	11	11	0
Palapye	3	0	0	1	0	0	1	0	1	1	0	0



Tools used for cross-border malaria surveillance – Border district incidence maps



Facilitate the reduction of cross-border malaria transmission



Tools used for cross-border malaria surveillance – Situation Room



Monthly Country Situation Room Updates – Monthly Updates of 2023

Key Malaria indicators	April	May	June
Total Number of Confirmed Malaria cases reported by month (<i>Please provide national level figures</i>)	751 714	891 497	840 056
% of total confirmed malaria cases against suspected cases/ tests conducted (<i>Optional- to be filled to determine positivity rate</i>)	43.4%	53.1%	54.9%
Total number of cases classified as local (<i>put NA if not applicable/ share data specific to elimination districts only</i>)	N/A	N/A	N/A
Total number of cases classified imported (<i>put NA if not applicable/ share data specific to elimination districts only</i>)	N/A	N/A	N/A
Total malaria deaths (<i>Please provide national level figures</i>)	892	1 079	938

Malaria Commodity Status

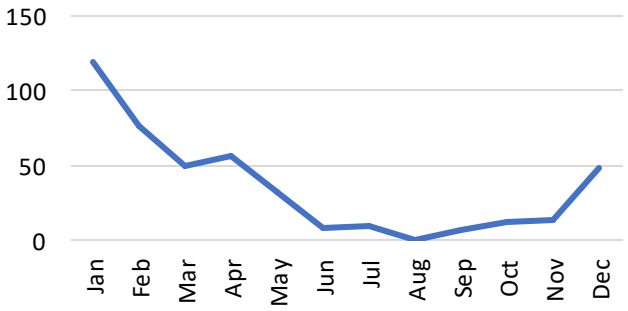
Key Malaria Interventions (Kindly please fill this part as seen in the RBM commodity tracking tool)	Number of doses/ tests/ commodities available at the end June 2023	Number of Months of stock	Number of doses needed up to December 2023	Any procurement in the Pipeline (Yes/No)			Which organization/ institution is procuring
				If yes, number of doses in pipeline	Number of months of stock for the quantity in pipeline	Expected delivery period	

Drugs(*Please mention any specific drugs or add another separate slide if there are many drugs to be reported*)

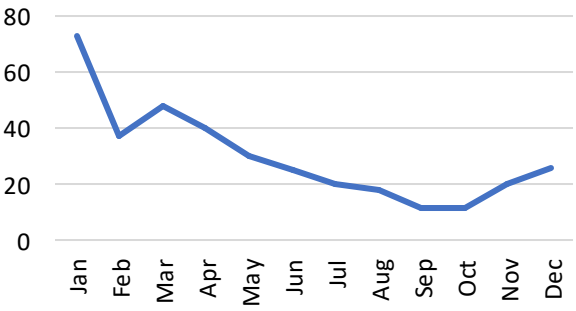
1. AL 6X1	4997851	10.8	4559370	4559370	10.5	Aug, Nov & Dec	GF & PMI
2. AL 6X2	1522509	5.7	3493073	3493073	9.4	Jul, Aug, Nov & Dec	GF & PMI
3. AL 6X3	1240196	6.6	2540460	3493073	10.6	Aug, Oct & Nov	GF & PMI
4. AL 6X4	2978228	6.4	6900810	6900810	11.3	Aug, Nov & Dec	GF & PMI
RDT	609375	7.3	1122479	1122479	10.5	Aug, Sep, Nov & Dec	GF & PMI
ITN	1127032	6.6	945273	0	7.2	Aug, Sep & Oct	GF

2022 Monthly Malaria Trends – Total Confirmed Cases

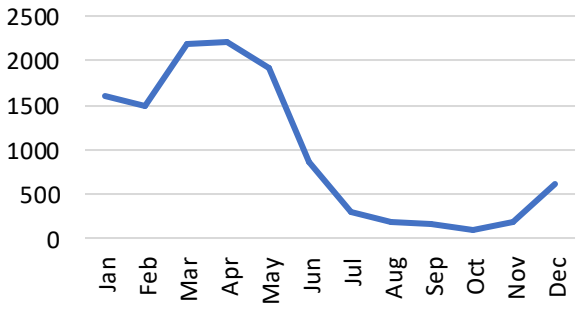
Botswana Confirmed cases



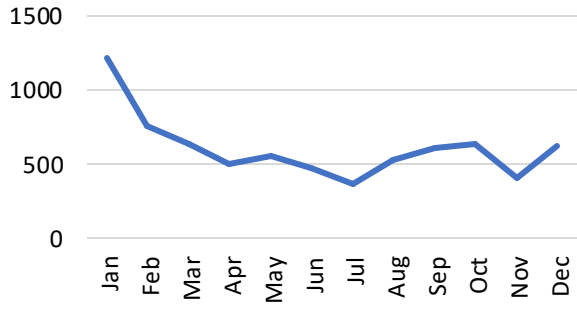
Eswatini Confirmed cases



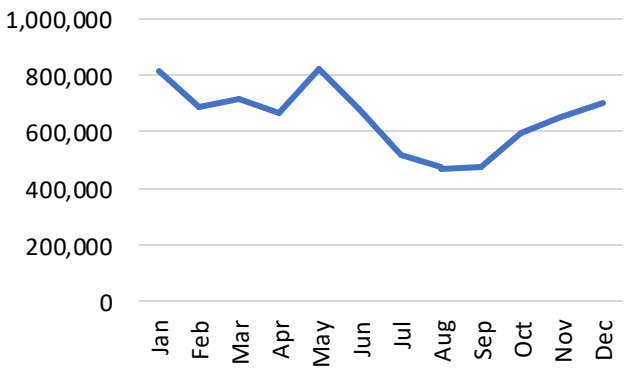
Namibia Confirmed cases



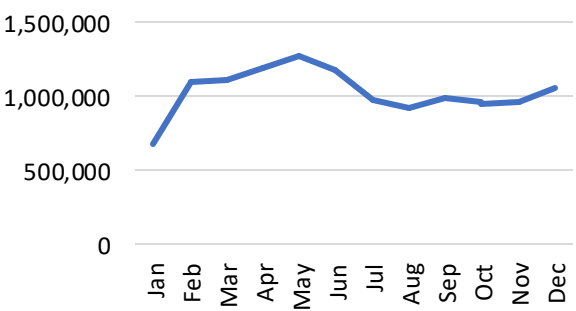
South Africa Confirmed cases



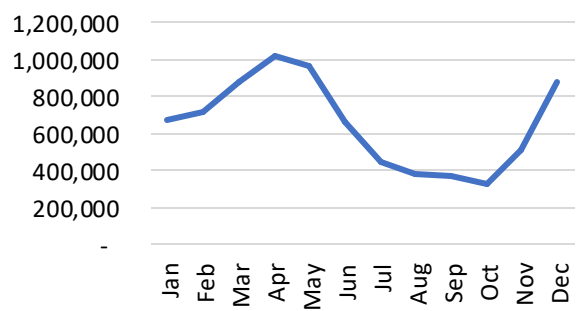
Angola Confirmed cases



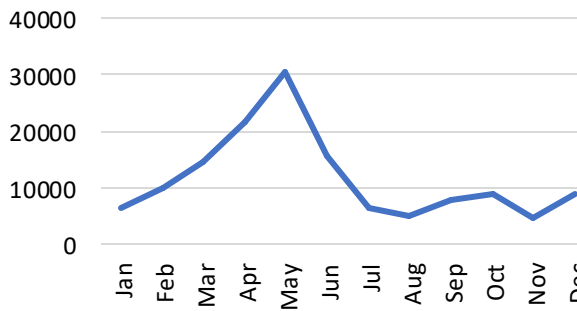
Mozambique Confirmed cases



Zambia Confirmed cases



Zimbabwe Confirmed cases

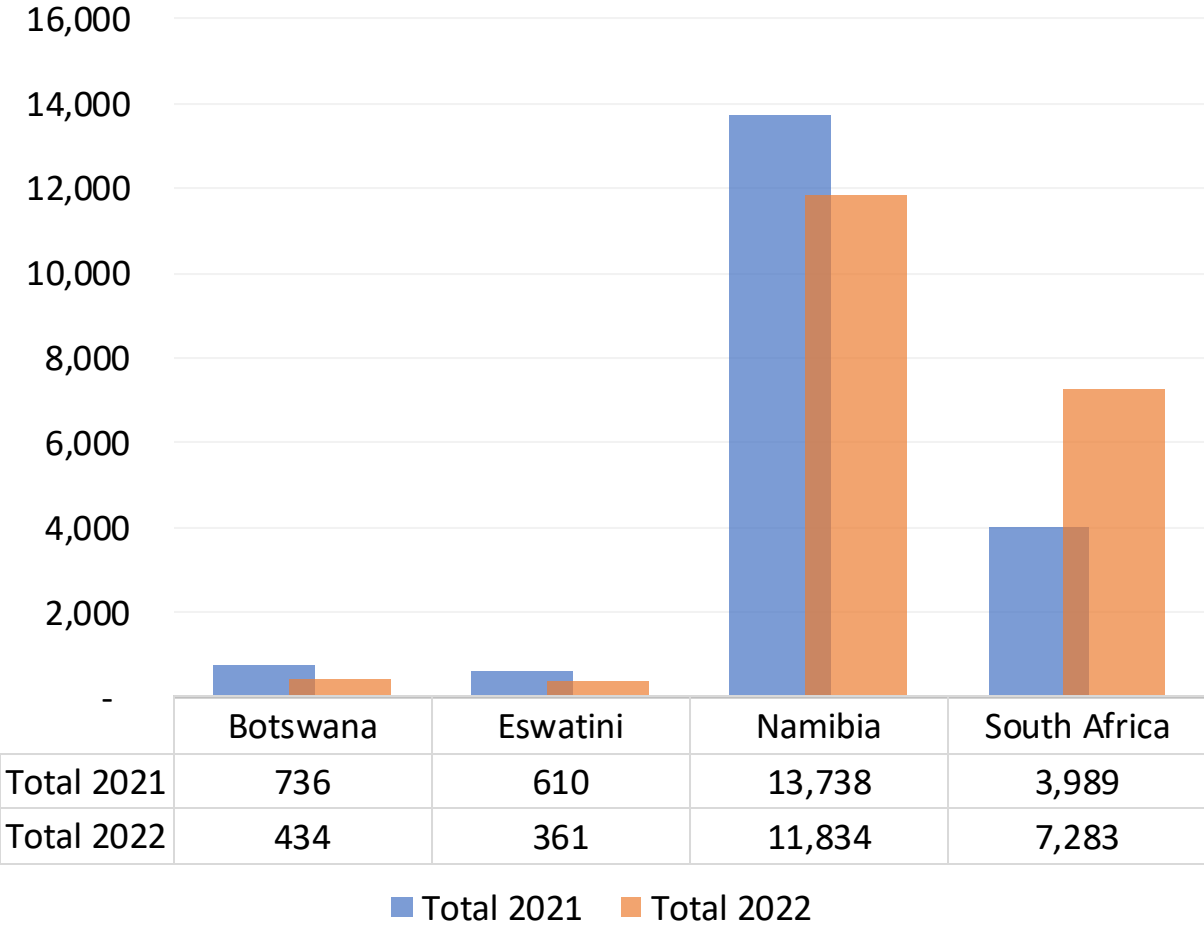


Tools used for cross-border malaria surveillance – A Regional Scorecard

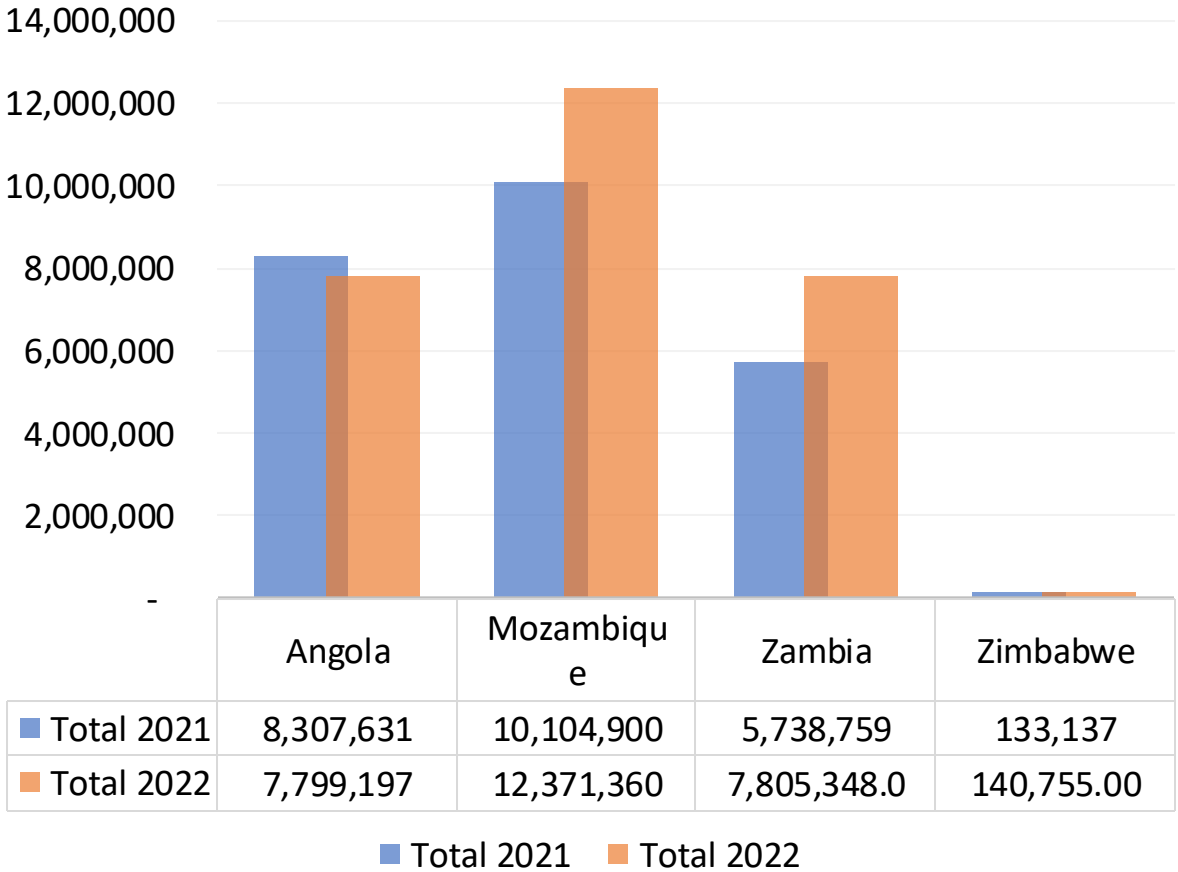
2020	Epidemiology									Vector Control		Financing	Policy				Management	
	Number of Confirmed Malaria Cases	Malaria Incidence Rate	Indigenous Malaria Incidence Rate	Reported Indigenous Malaria Cases	Reported Malaria Deaths	Test Positivity Rate (%)	Proportion of suspected Cases Tested (%)	Completeness of Reporting (%)	Proportion of Confirmed Cases Treated as per Guidelines (%)	IRS Operational Coverage (%)	LLINs Operational Coverage (%)	National Public Sector Financing (%)	Malaria Is A Notifiable Disease (YES/NO)	Surveillance		Diagnosis	Treatment	National malaria elimination committee is in place
Case And Foci Investigation And Case Classification Is Conducted														Case Reporting From The Private Sector Is Mandatory	Quality Assurance Oversight By National Reference Laboratory	Treatment of cases with primaquine		
FRONT-LINE COUNTRIES																		
Botswana	927	0.39	0.36	868	11	8.3	94.2	86.5	98	76.5		11.4	YES	YES	YES	YES	BOTH	YES
ESwazini	322	0.95	0.69	235	4	1.3	100	89	100	92.0		10.5	YES	YES	YES	YES	BOTH	YES
Namibia	14,227	8.70	7.30	11,934	52	4.4	99	97	100	45.2		12.0	YES	YES	YES	YES	YES	YES
South Africa	8,126	0.84	0.33	3,173	38		100	96	100	70.0		13.0	YES	YES	YES	YES	BOTH	YES
SUB-NATIONAL ELIMINATION DISTRICTS																		
Mozambique ¹	55,072	26.40	26.40	55,072	6	19.5	100	97	89	99.0	100		YES	NO	NO	YES	NO	YES
Zambia ²	172,200	144.30			37	38.2	97	93	97	94.0			YES	YES	NO	YES		YES
Zimbabwe ³	12,992	2.00	1	6,960	78	23.3	100	99	97	93.0			YES	YES	NO	YES	YES	YES
SECOND-LINE COUNTRIES																		
Angola	6,519,843	250.00			11,573	52.2	96.0	83.3	100	92.0		4.6	YES			YES	BOTH	
Mozambique	11,318,685	377.00			563	58.0	100	96	99	98.0	75	12.3	YES			YES		YES
Zambia	7,060,622	427.00			1,971	56.3	96	97	98	87.4		8.8				YES		YES
Zimbabwe	447,381	32			402	32.0	98	97	99	93.0	100	10.7	YES	YES		YES	YES	YES

Total Confirmed Malaria Cases in 2022 versus 2021

Total Confirmed Malaria Cases In Frontline Countries



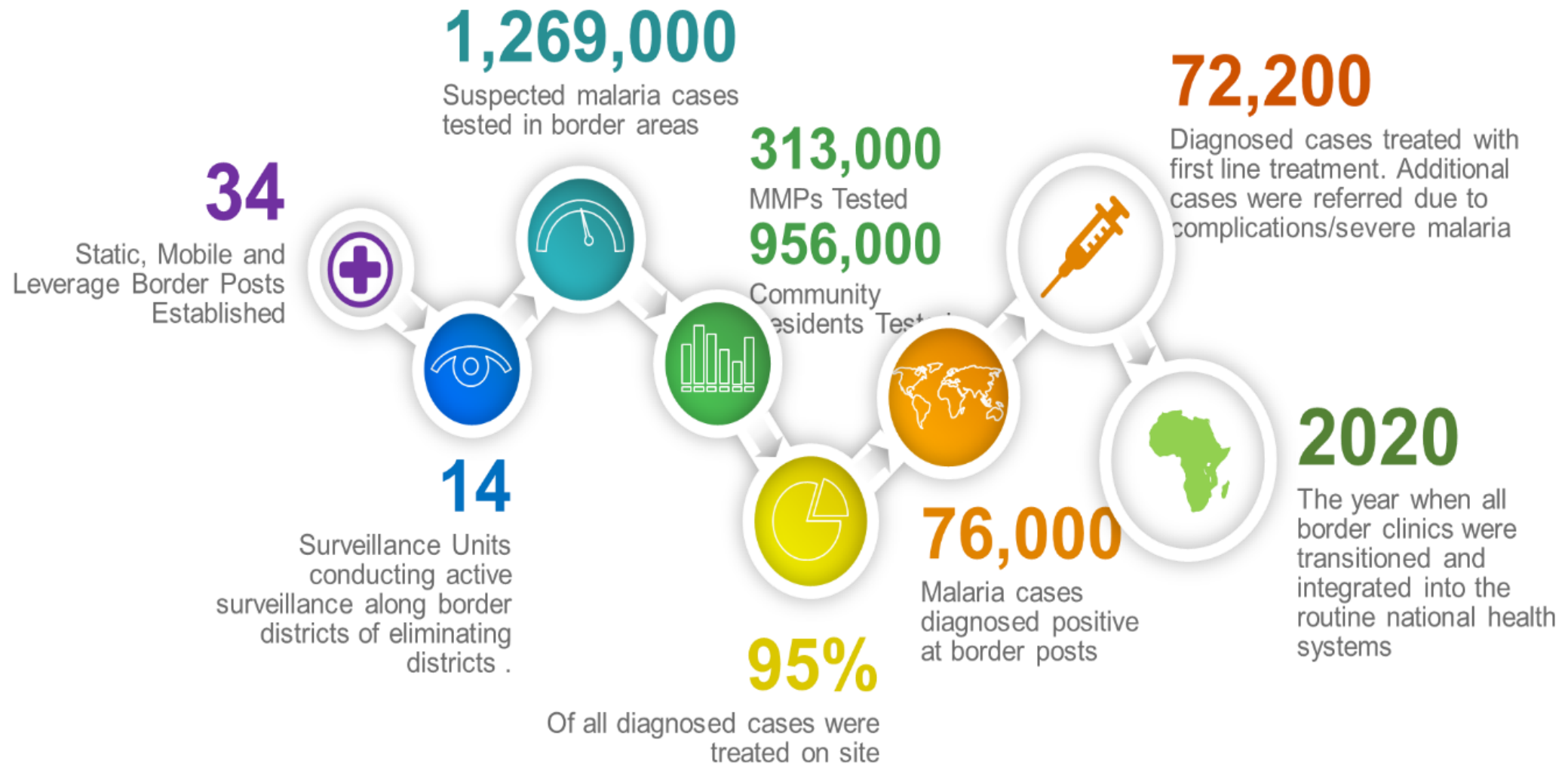
Total Confirmed Malaria Cases In Second-line Countries



Tools used for cross-border malaria surveillance – Border Health Posts



Tools used for cross-border malaria surveillance – Border Health Post Results



Tools used for cross-border malaria surveillance – The E8 and SADC Annual Reports

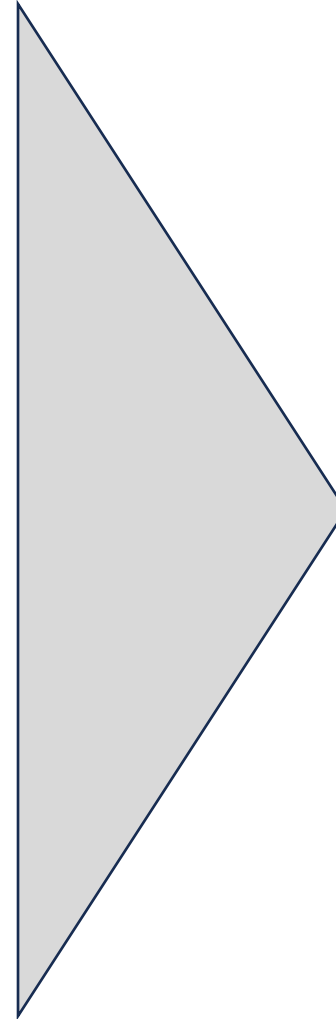
SADC E8 Malaria Initiative

Annual Report 2022



ELIMINATION 8

Angola • Botswana • Eswatini • Mozambique
Namibia • South Africa • Zambia • Zimbabwe



Approved November 2009



Situation and Response Analysis Report on Malaria in the SADC Region



Outline



Innovations and Ideas



Innovations and ideas– Web based tools for near real time reporting



ELIMINATION 8

Epidemic Preparedness & Response

Home | Country Admin | Posts | Logout



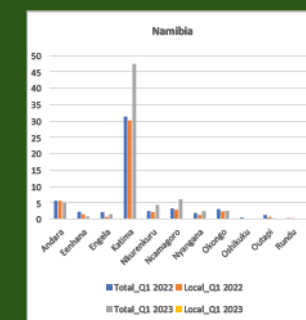
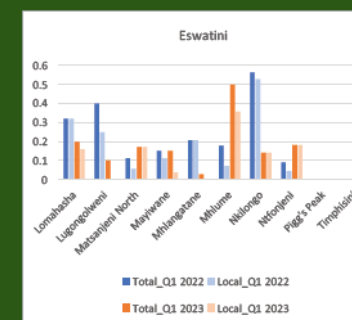
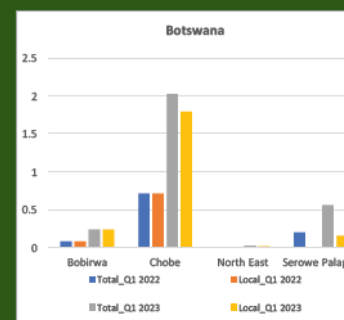
REGIONAL SURVEILLANCE BULLETIN

1st QUARTER 2023

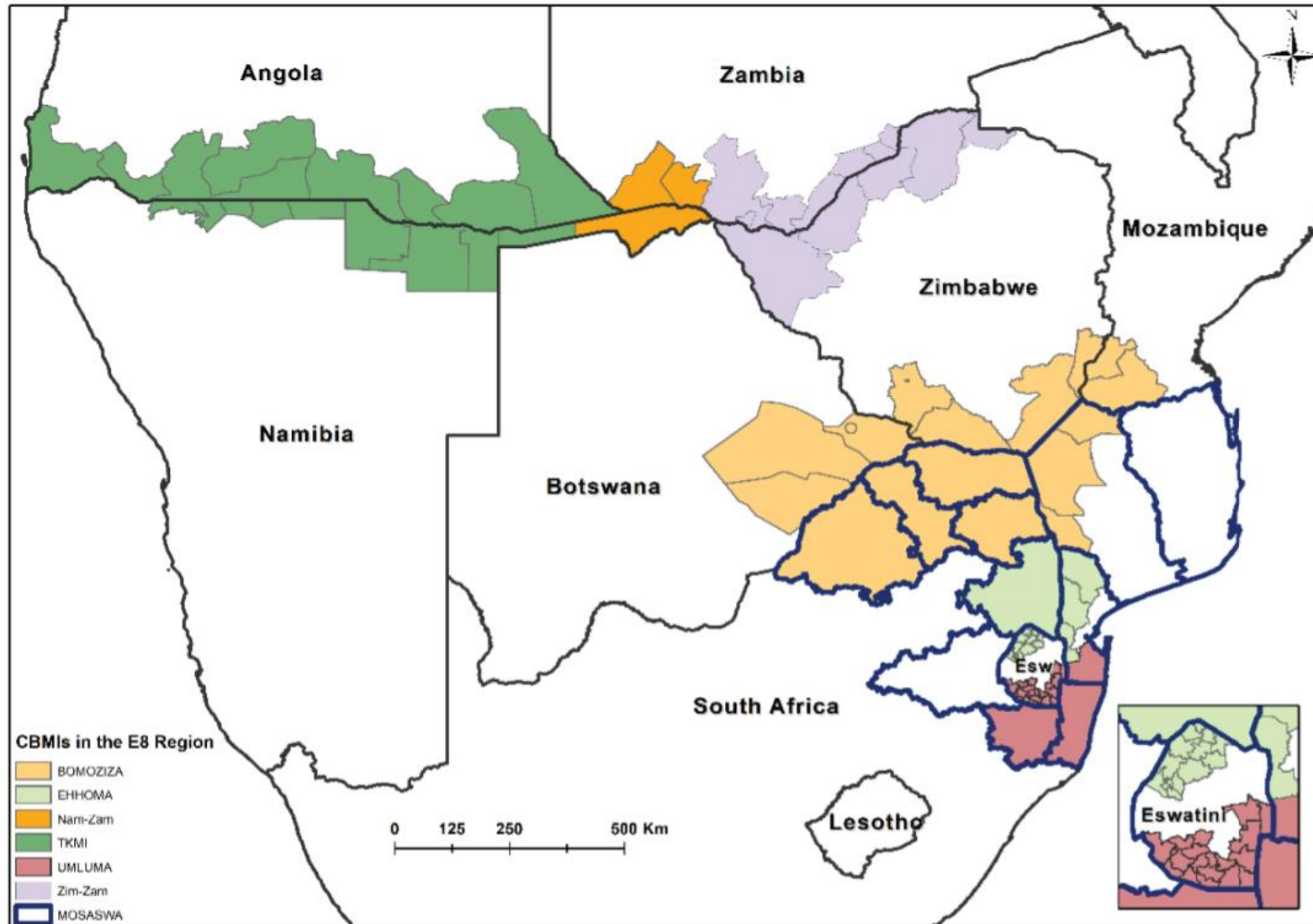


INTRODUCTION

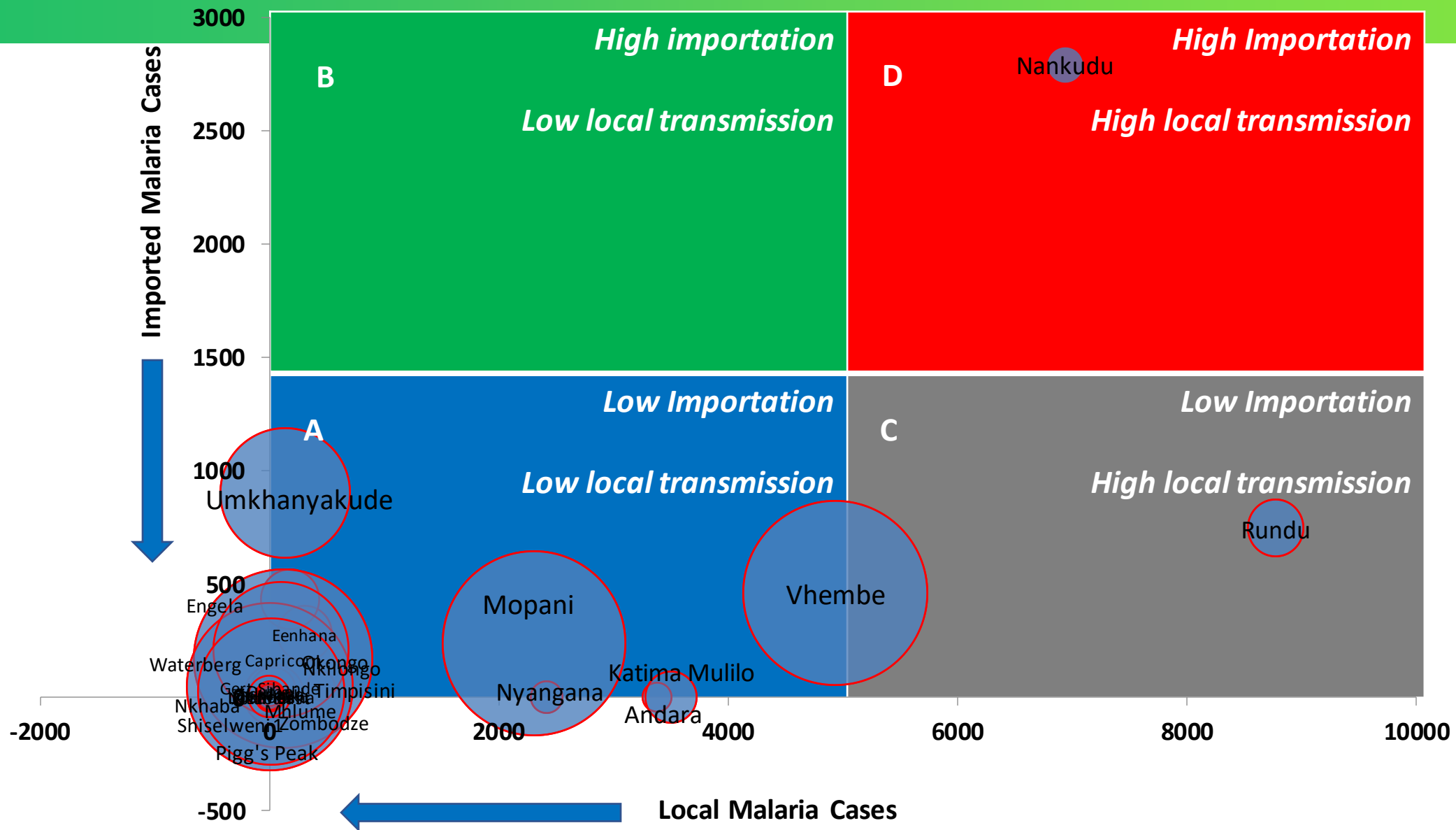
The E8 Surveillance Bulletin presents highlights on quarterly malaria transmission patterns as well as the prevailing weather and climate conditions in the E8 region. The Surveillance Bulletin provides updates on malaria incidence in E8 border districts; weather and climate anomalies, and the regional epidemic, preparedness, and response (EPR) status. Malaria data are obtained through routine monthly border surveillance reporting, which are part of the tools for regional surveillance.



Innovations and ideas– Cross-border Committees



Innovations and ideas to introduce – Sub-national elimination approach – 2019 border district data



Outline



★ Summary of regional indicator tracking and action



Summary of data in action – Border malaria surveillance

Indicator	Reporting frequency	Action
1. Border district data – Cases and deaths	Monthly	Epidemic preparedness and response
2. Country malaria situation	Monthly	Partnership update and support
3. Quarterly surveillance bulletins	Quarterly	Forecasting and preparedness
4. The E8 regional malaria scorecard	Annual	Policy formulation and decision making
5. Border Health Posts	Quarterly	Targeting mobile and migrant populations
6. Sub-national verification of malaria free status	Annual	Best practices and award for districts that interrupt transmission.