

Paving the way for sustainable development with malaria as tracer

The Pathfinder Endeavour

The 6th Annual RBM MSWG Meeting

Erik Blas, 19 April, 2024

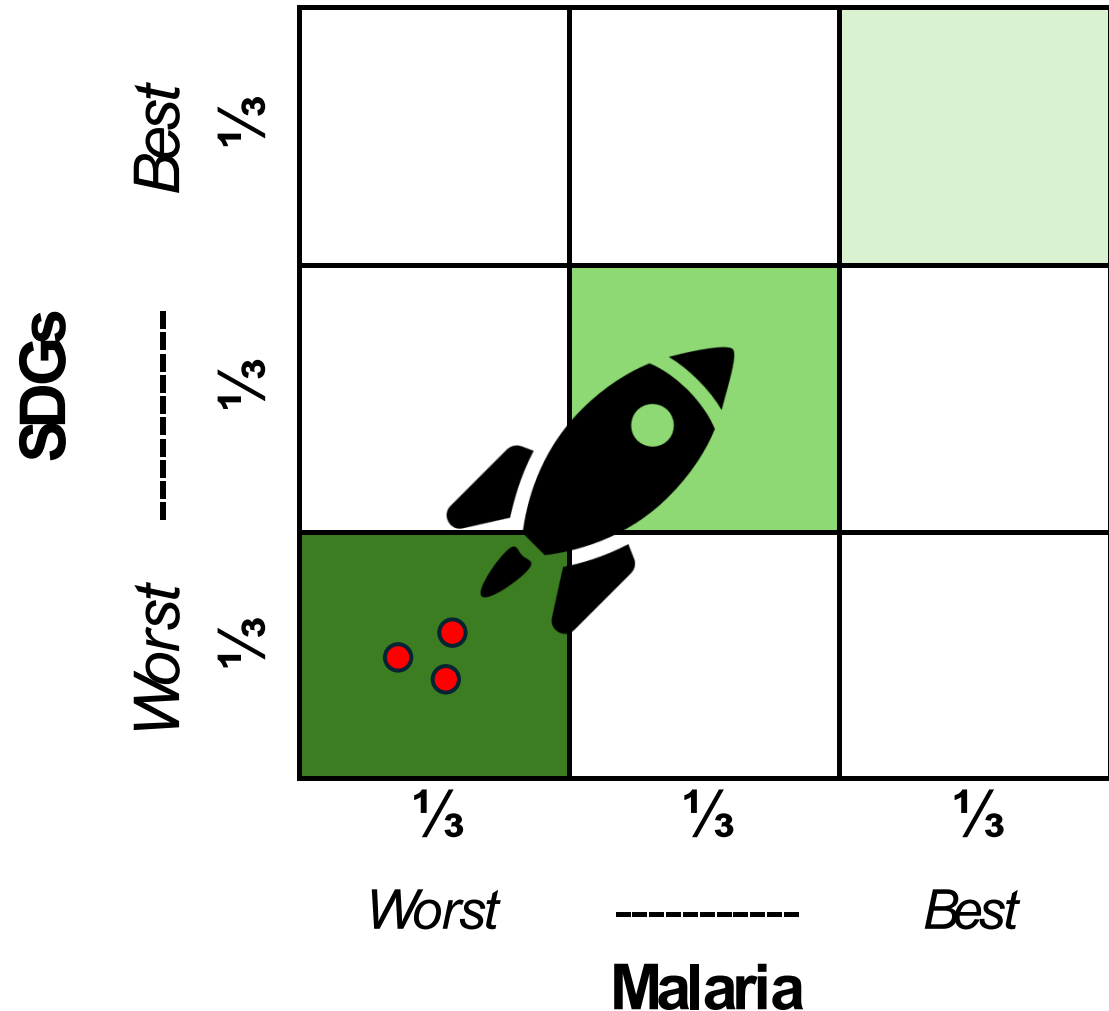
Partners: UNDP, UNHabitat, RBM Partnership to End Malaria, WHO (GMP, NTD, SDH)

Additional partners (tbc): Evaluation, data, communication, funding, other development

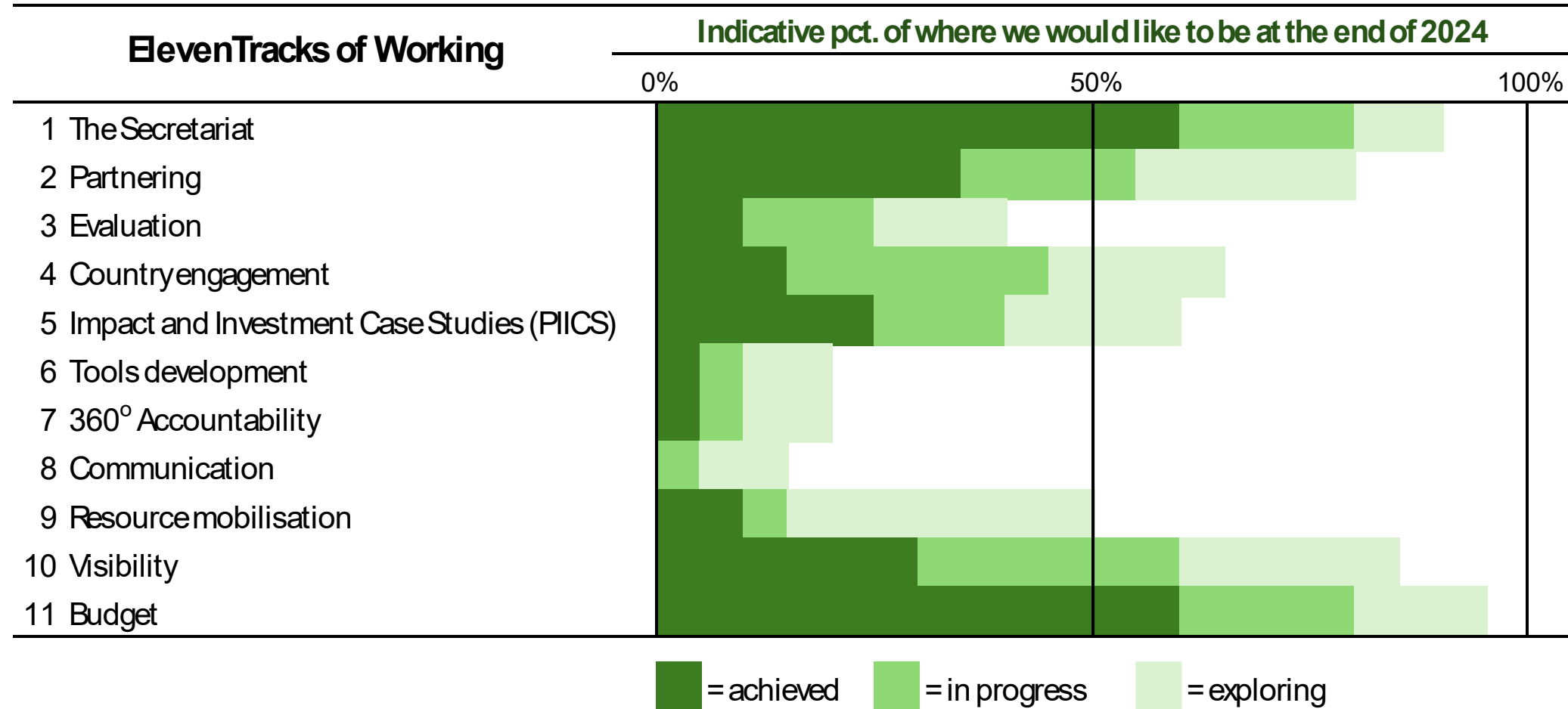
The situation today

- The 2030 elimination goals will be missed
- Achievements are fragile
- Funding is dwindling and shifting focus
- Those furthest behind remain furthest behind

The Pathfinder



Implementation status as of April 2024



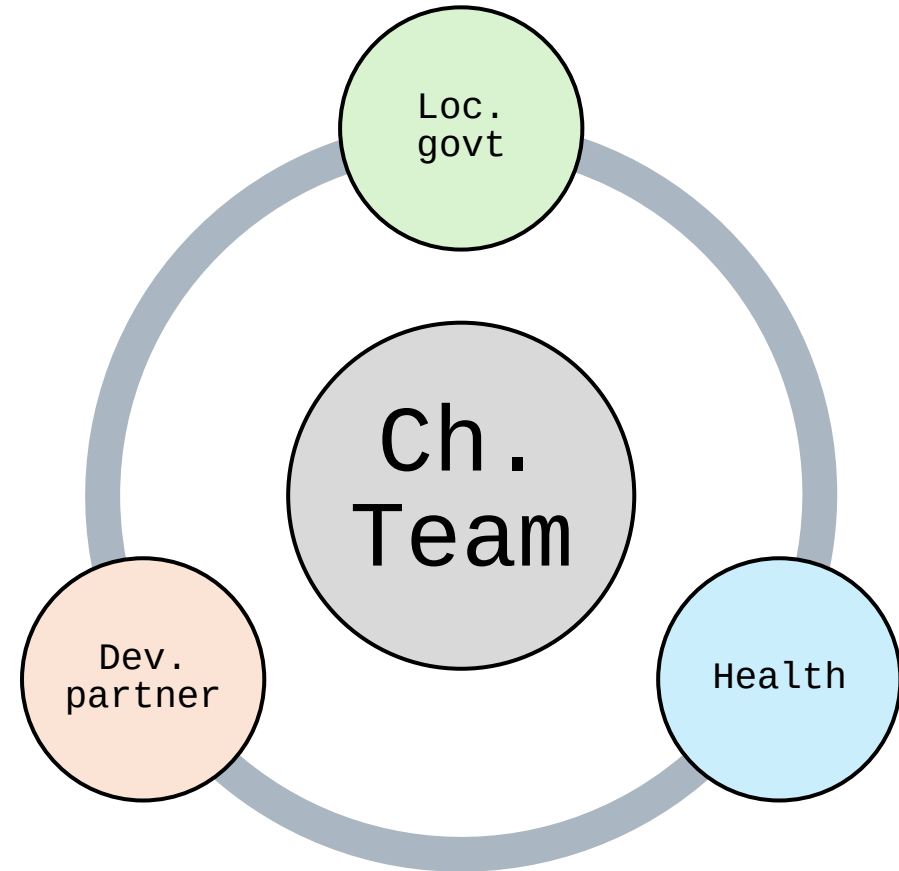
The Pathfinder Champion Team

Oh no!

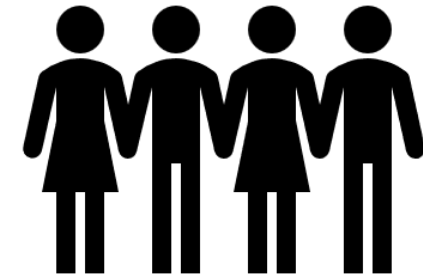
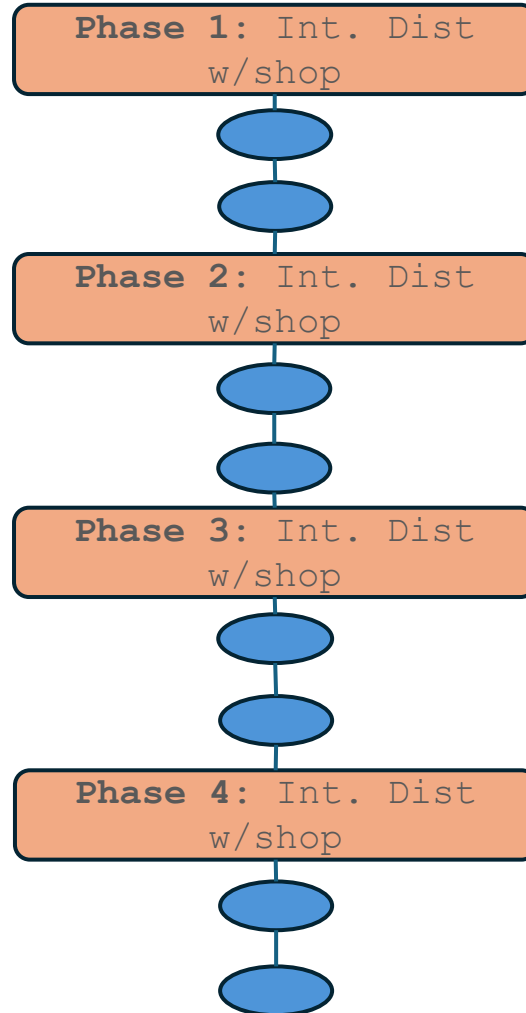
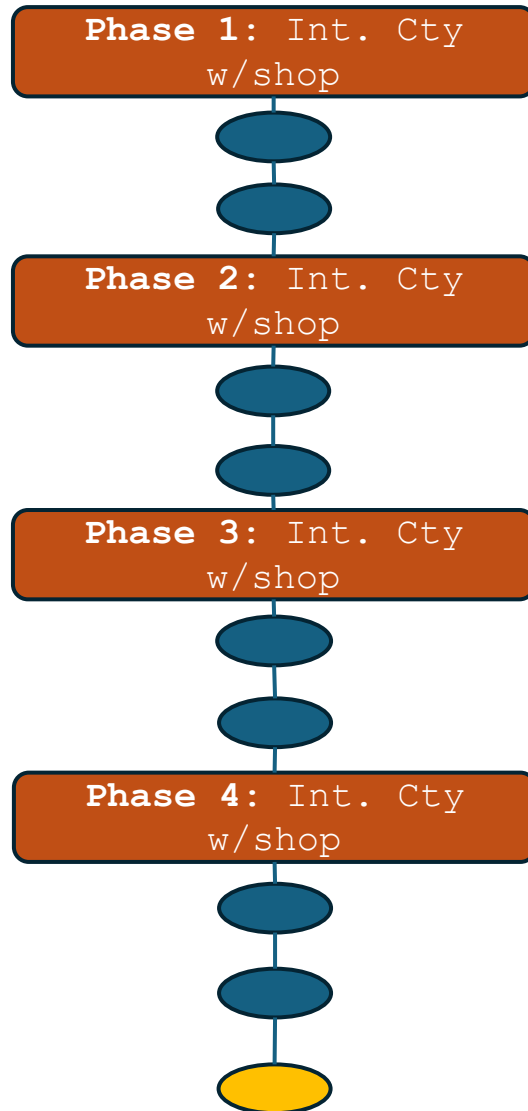


It's so difficult

YES



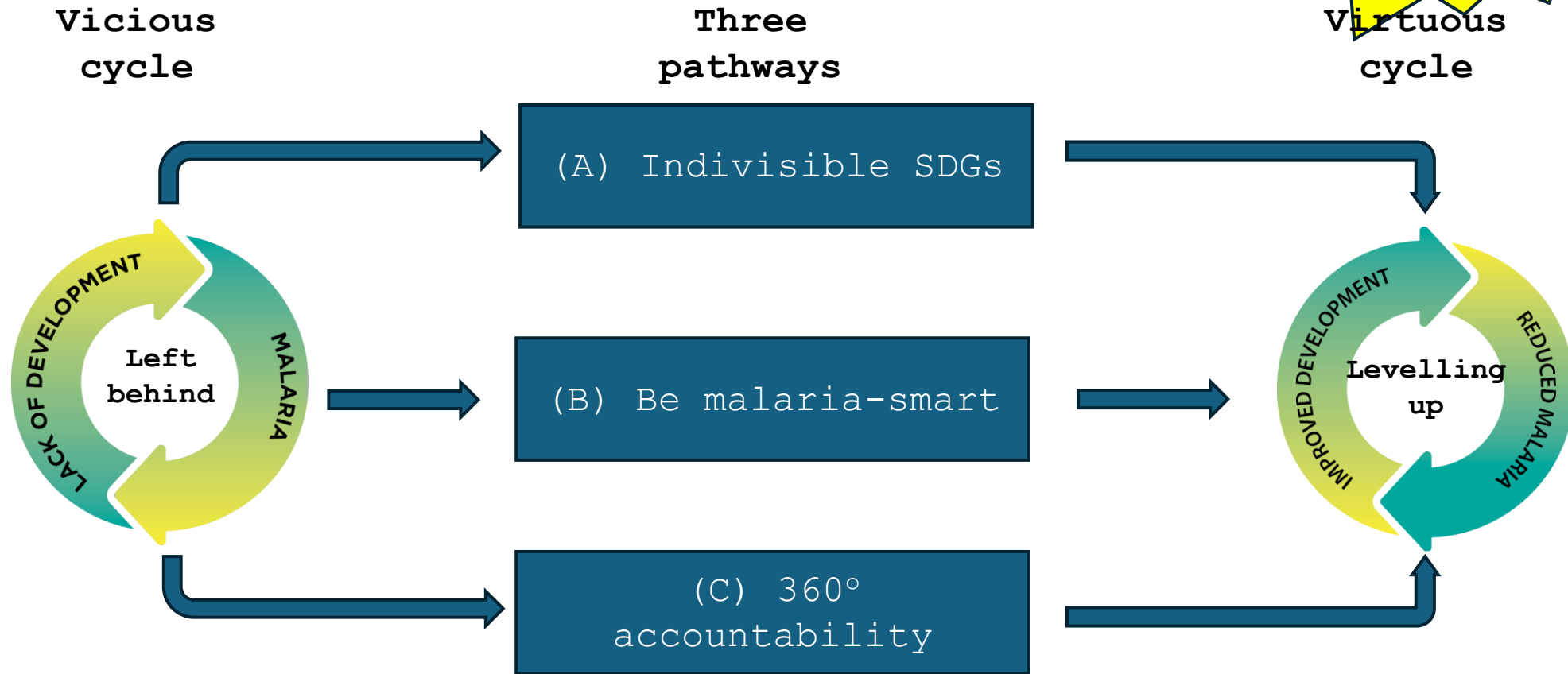
Groom, empower, support, and institutionalize



Tools, build capacity,
catalytic funds,
technical assistance,
and peer-reviews

Comprehensive Multisectoral Action on

Three pathways from vicious to virtuous



Guiding principles: Complement and enhance existing structures, programmes and resources – don't duplicate or replace

Pathway A: Indivisible SDGs

Group 1. Political / Institutional



Group 2. Economic



Group 3. Social



Group 4. Environment and climate



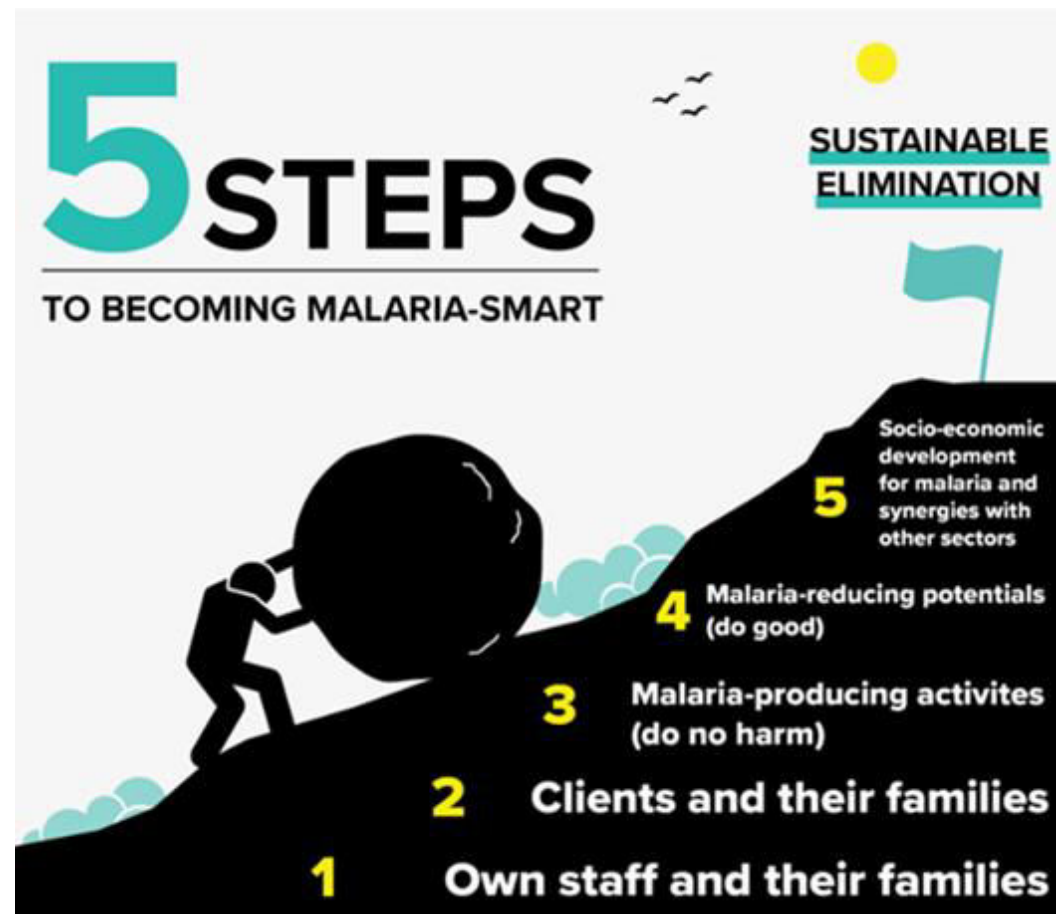
Group 5. Health



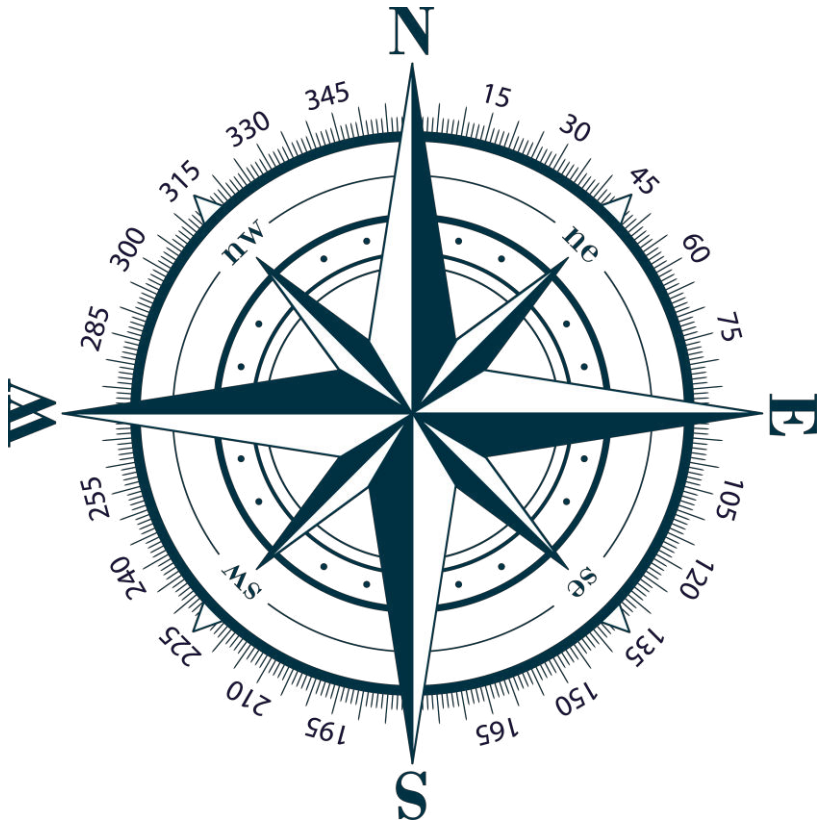
- *In addition to the relevant global malaria, NTD and enteric disease indicators*
- The district chooses, monitors, and acts on at least two ***malaria-critical indicators*** for each of the five SDG groups.
- Guidance to ***collect and analyze disaggregated*** SDG-indicator data within district.
- Guidance to effectively ***improve and level-up*** SDGs, areas and populations left behind.
- Guidance and tools for ***local councils and assemblies*** to use disaggregated data for policymaking, planning, and action.
- Guidance to ***articulate needs*** and ***call for support***.

Pathway B: Be Malaria-smart

- Step 1 – Engage public and private **employers** in demand-side actions to reduce barriers in effective coverage of conventional disease interventions for own staff and their families.
- Step 2 – Engage public and private **providers of goods and services** to do the same for clients, customers, and their families.
- Step 3 – Guidance to map, analyze, and act on malaria-producing areas and activities (**do-no-harm**)
- Step 4 – Guidance to map, analyze, and encourage processes and activities with malaria-reducing potentials (**do-good**)
- Step 5 – Guidance to map, analyze and address **root-causes of inequities** within the district.



Pathway C: 360° Accountability



- **Political** // *local councils* to act, monitor, and hold district and national players accountable.
- **Technical** // *analyze and act* on GTS, NTD, enteric disease and SDG indicators.
- **Public** // direct and real-time *engagement of citizens*, including through digital platforms.

Political and public accountability

Community logs

- Communities have always registered changes, unusual events, hopes, ...
- Through stories, pictures, songs, ...
- Also since long used in formal community development

Citizens science

- Often used in environmental research and mapping
- Counting birds, hedgehogs, stagnant water, ...
- Sociology, ethnography, ...

Complete & Transparent

- Cornerstone for good governance and trust
- People have a right to know
- The authorities have a need to know
- Left-behind shouldn't also mean lost-in-aggregation.

Smartphone Apps

- Remind, inform, in e.g., health, education, ballots, ...
- Engage, report, capture, reshare, ...
- The little AI-helper, analyses, georeferencing, ...
- Unlimited access to information, ...

The Pathfinder Endavour

World Cafe

Session Chair, incl. time and logistics: Peter

- 1. Café-discussions at the three tables** – one for each pathway from vicious to virtuous
 - Table A: Indivisible SDGs
 - Table B: Be malaria-smart (in 5 steps)
 - Table C: 360° Accountability

- 2. **Process****
 - Each table has two discussion leads – who remain at the table while the other café-guests move to the next table after 15 minutes
 - The tables discuss three pre-defined questions
 - The table discussion leads record answers to the three questions – making sure that after the three rounds all questions are addressed

- 3. **Plenary****
 - The discussion leads of each table reports back what *they* concluded (*5 minutes // 3 slides*)
 - Closing reflections by *Erik* (*5 minutes*)

Imagine you're member of the District's Pathfinder Champion Team – Discuss:

Cafe-table Pathway A: Indivisible SDGs	Cafe-table Pathway B: Be malaria smart (5-steps)	Cafe-table Pathway C: 360° Accountability
<ol style="list-style-type: none"> 1. What are the opportunities for you to change the way sectors work together on the SDGs? 2. How would you get started? 3. How would you know if ways of working have improved? 	<ol style="list-style-type: none"> 1. What are the opportunities for you to make public and private sector managers think malaria-smart? 2. How would you get started? 3. How would you know if <u>you</u> have made a difference? 	<ol style="list-style-type: none"> 1. What are the opportunities for you to push for political, technical and public accountability? 2. How would you get started? 3. How would you know if you have succeeded?

Note! Each table's discussion leads listen to all the guests passing by their table. They conclude and present to the plenary **their** take on the answers to each of the three Pathway questions (max. three slides)